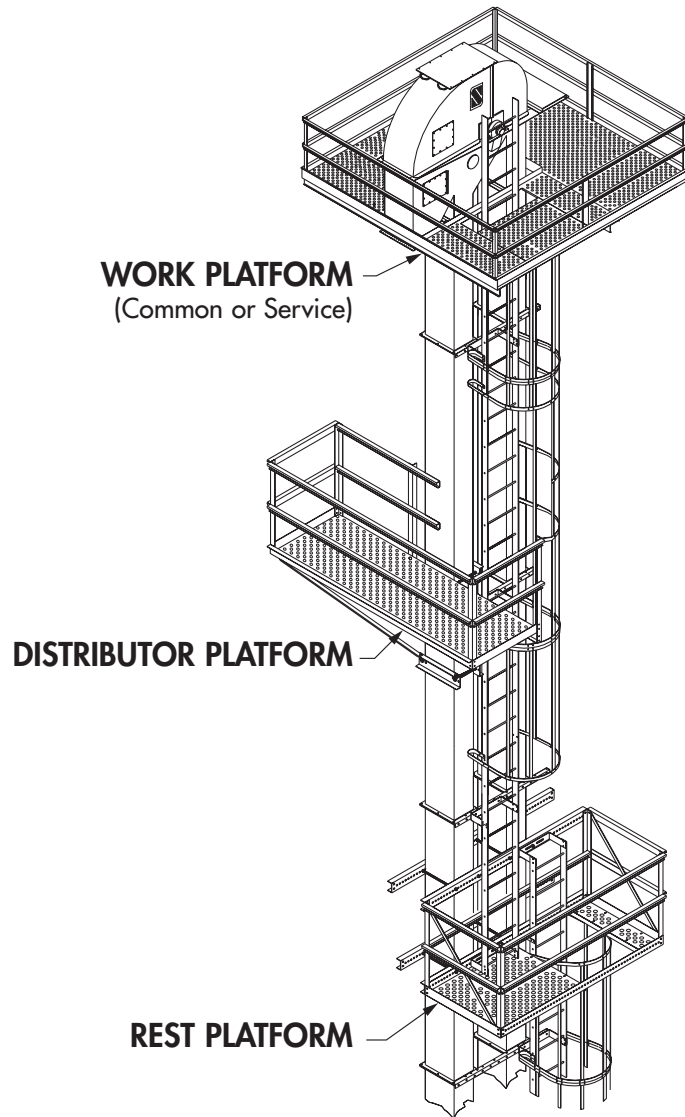


PLATFORMS

Assembly Manual



SCHLAGEL

Manufacturers of Innovative Materials Handling Equipment since 1957.

491 North Emerson Street * Cambridge MN 55008-1316 U.S.A.
Toll Free (800) 328-8002 FAX (763) 689-5310
Local / International (763) 689-5991 EMAIL sales@schlagel.com
www.schlagel.com

TABLE OF CONTENTS

SECTION 1 - GENERAL

Pages	2	Introduction
	2	Use of manual
	2	Information service
	2	Safety code
	2	Uncrating and inspection

SECTION 2 - WORK PLATFORM ASSEMBLY

		Models CS101, CS161, #6 & #10
Pages	3-5	Assembly
	6	Bill of materials
	7	Dimensions

Models #16 - #48

	8-10	Assembly
	11	Bill of materials
	12	Dimensions

360° Models #16 - #48

	13-15	Assembly
	16	Bill of materials
	17	Dimensions

SECTION 3 - DISTRIBUTOR PLATFORM ASSEMBLY

Pages	18-20	Assembly
	21	Bill of materials

SECTION 4 - REST PLATFORM ASSEMBLY

Pages	22-24	Assembly
	25	Bill of materials

SECTION 5 - LADDER LOCATION AND ASSEMBLY

Pages	26	Ladder location	
		- All models with No Rest Platform	
	27	Ladder location	
		- All models with Rest Platform	
	28	Ladder assembly	

SECTION 6 - ACCESS DOORS

Pages	29	Flared Inlet Access
	30	Ladder Access Door

INTRODUCTION

Schlagel, Inc. of Cambridge, Minnesota, has had many years of experience in producing industrial quality material handling equipment.

Our standard galvanized service platforms, distributor platforms, offset rest platforms, ladder and cage assemblies are configured to meet OSHA requirements and designed to assist you in maintaining your equipment. Call the factory for assistance on any special requirements.

All Equipment manufactured by Schlagel, Inc. is guaranteed to be free from defects in materials and workmanship, providing no alteration or repair has been made by the user unless authorized in writing by Schlagel, Inc.

USE OF MANUAL

This manual provides installation, operation, service recommendations and replacement parts identification for Schlagel Platforms.

Each section of the manual is fully illustrated for fast, accurate reference. It is highly recommended that this manual be read thoroughly by those who are responsible for the installation, operation and maintenance of this platform. Refer to the Table of Contents, Page 1 for the location of specific information.

As new information and equipment become available, service and parts bulletins will be issued by Schlagel, Inc. So that they will be readily available for reference, all bulletins should be inserted with this manual. This manual covers standard platform equipment only. For any items or special equipment not covered in this manual, please consult our service department for recommendations or instructions regarding this equipment.

INFORMATION SERVICE

Our service department will provide consultation on installation, operation and maintenance at no cost to you. Also, information from you, regarding encountered operation or service problems that are not covered in this manual will be greatly appreciated.

Contact Schlagel, Inc. for information on adding new equipment to your system or changing your installation such as: Lengthening or shortening, adding or deleting platforms, and etc.

Write or Call: Schlagel, Inc.
491 North Emerson Street
Cambridge, MN 55008
(763) 689-5991 or 1-800-328-8002


SAFETY CODE



CAUTION



The icon shown below was proposed as a safety alert symbol by the Farm and Industrial Equipment Institute (FIEI) and approved by the American Society of Automotive Engineers (ASAE) and others for the purpose of calling attention to safety precautions which if not heeded might lead to bodily injury.

Please read instructions carefully and follow the instructions exactly wherever this symbol  appears in the manual.

UNCRATING AND INSPECTION

All parts have been carefully checked before shipment from our factory. Carefully inspect all parts for damage that may have occurred during shipment. Check to make sure that all items listed in your Packing List are included.

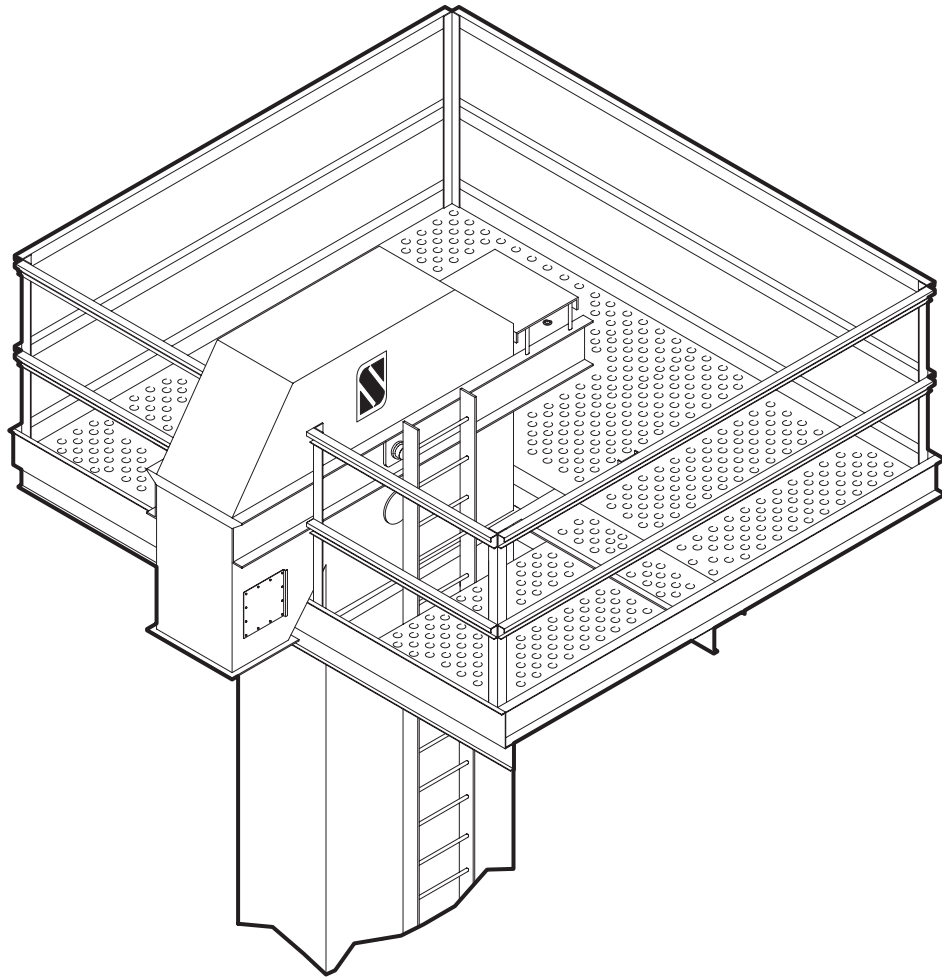
If damages or shortages are noted, have the transportation company's representative note this on the Bill of Lading and notify Schlagel, Inc. Forward this information along with the shipping date so that we may expedite the replacement parts.

IMPORTANT

All claims for shipping damages must be noted by the consignee at the time of delivery and filed with the transportation company.

TYPICAL WORK PLATFORM

MODELS CS101, CS161 AND #6 - #10



LADDER AND PLATFORM ARRANGEMENT FOR RIGHT HAND DRIVE.
(FOR "LEFT HAND" DRIVE THE ASSEMBLY WOULD BE THE MIRROR IMAGE OF THIS ARRANGEMENT.)

ASSEMBLY OF BASIC COMPONENTS

NOTE - Hand tighten all bolts until platform is assembled before being fully tightened.

Shown as a right hand drive.

NOTE - Reference drawing page 3 and bill of materials list on page 6.

Model #6 Instructions

STEP 1

1. Bolt front channel (C) to the holes in 36" x 6" bracket (A) factory mounted to trunking.
2. Bolt rear channel (D) to formed bracket (B) factory mounted on the up side of trunking.

STEP 2

1. Place side channels (E) on front channel (C) and rear channel (D).

NOTE - Left and right sides

Models #10, CS101 AND CS161 Instructions

STEP 1

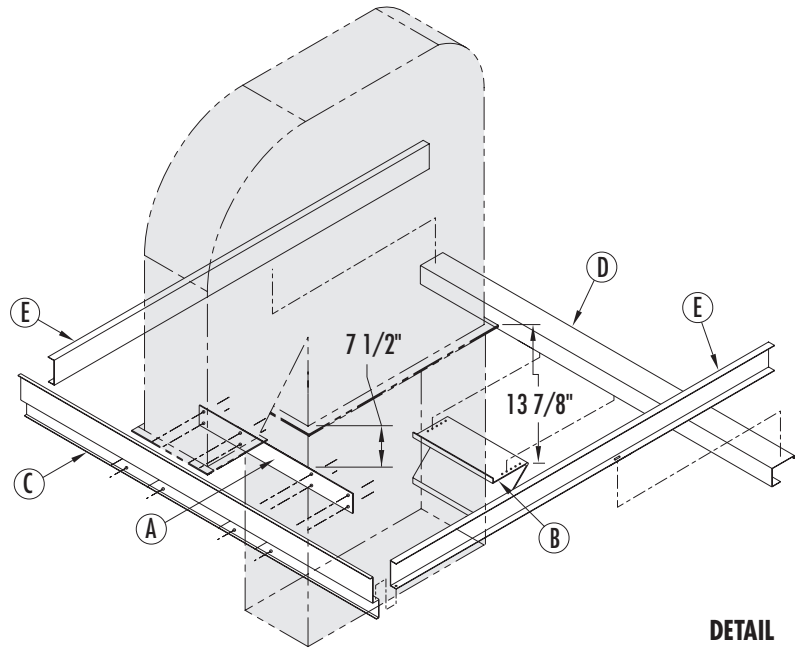
1. Bolt front channel (C) to the holes in 36" x 6" bracket (A) factory mounted to trunking.
2. Bolt rear channel (D) to holes in the 36" x 6" bracket (A) factory mounted on the up side of trunking.

STEP 2

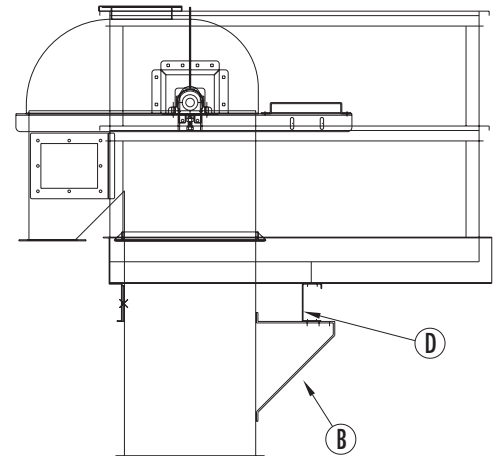
1. Place side channels (E) on front channel (C) and rear channel (D).

NOTE - Left and right sides

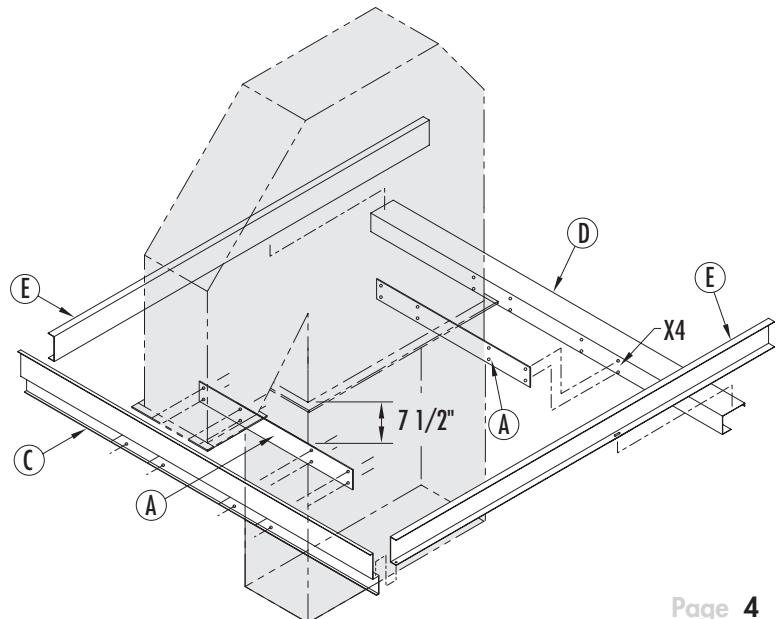
Model #6



DETAIL



Model #10, CS101 AND CS161



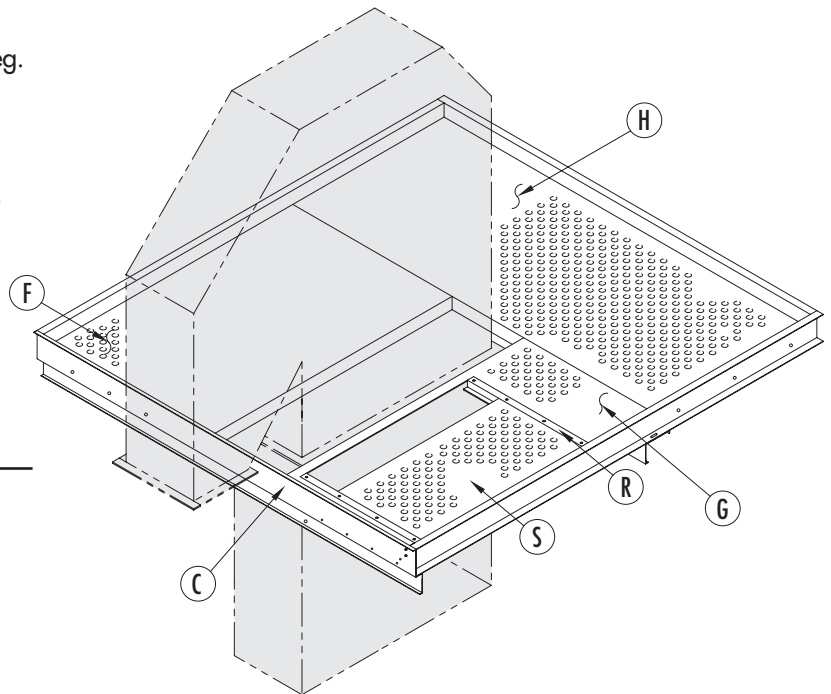
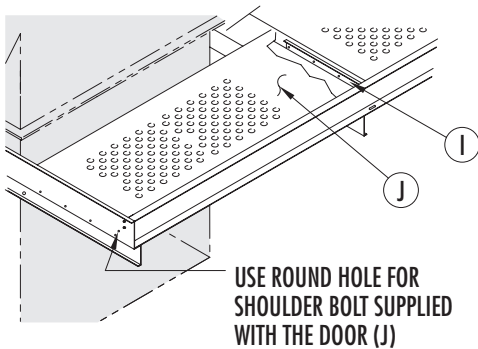
SECTION 2 - WORK PLATFORM ASSEMBLY

STEP 3

1. Bolt in side panel with door opening (G) to channels (C, D & E) opposite the drive side of the leg.
***For Model #6 use below**
2. Bolt in side panel (F) to channels (C, D, & E).
3. Bolt in rear panel (H) to channels (D & E) and side panels (F & G).
4. Bolt in door stops (R) and door panel (S) to panel (G).

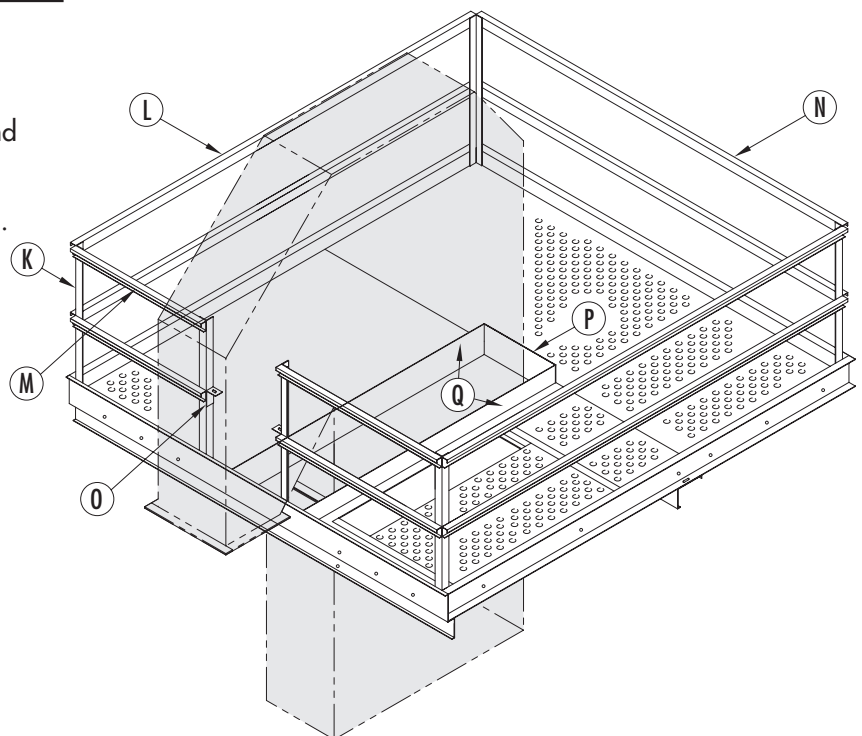
***Model #6 Instructions for door**

1. Bolt in the door stops (I) to panel (H) and front channel (C).
2. Bolt in the door panel (J) to panel (H) and front channel (C) opposite the drive side of leg.



STEP 4

1. Bolt on corner post (K).
2. Bolt on handrails (L, M, & N).
3. Bolt on support braces (O) to corner post (K) and head section.
4. Bolt on kick plates (P & Q) to panels (F, G, & H).

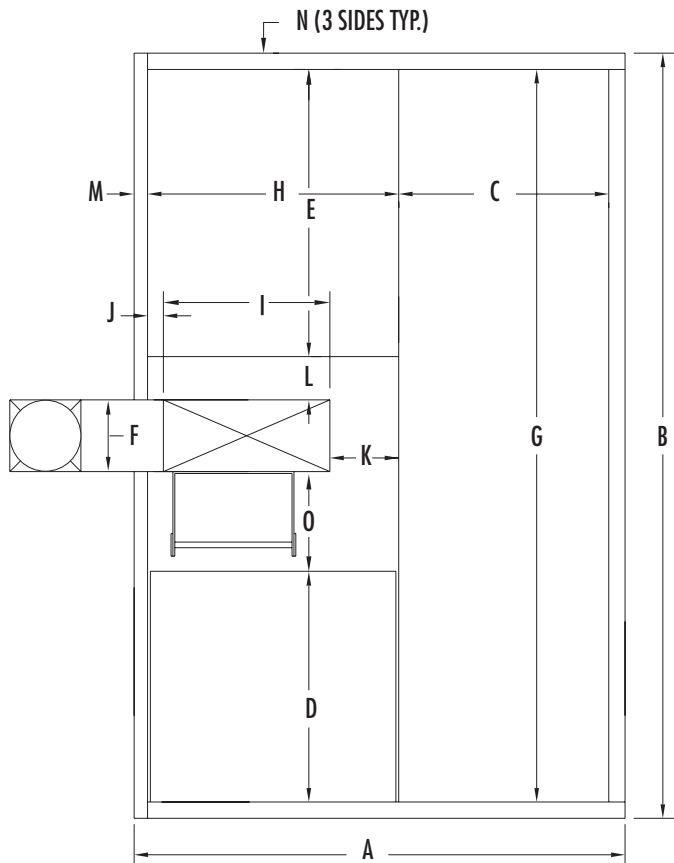


BILL OF MATERIALS - MODELS #6, #10, CS101 AND CS161

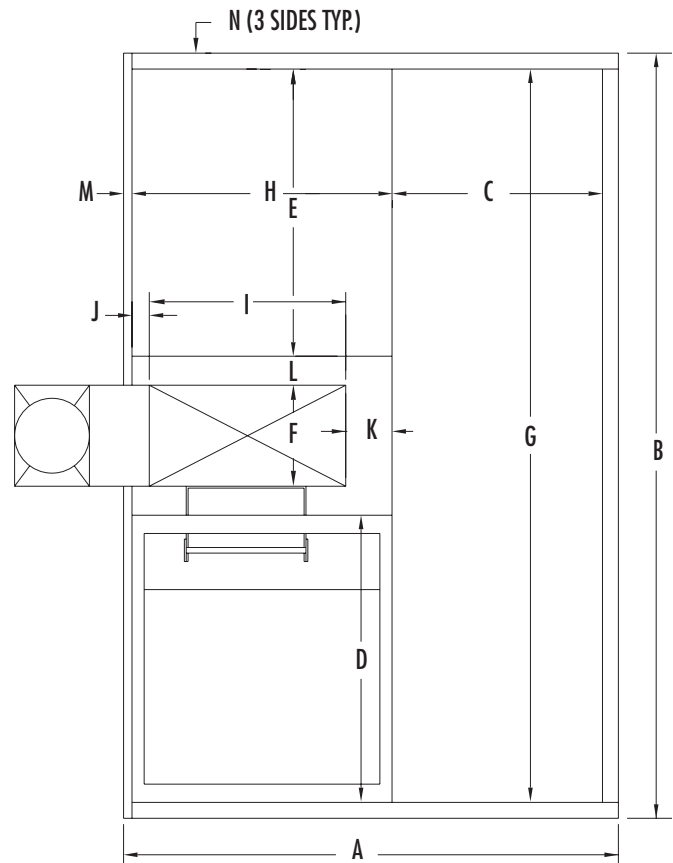
PART I.D.	QTY.	DESCRIPTION	MODELS			
			CS-101	CS-161	#6	#10
A	1	DOWN SIDE MOUNTING PLATE (36" LONG)	FACTORY MOUNTED	FACTORY MOUNTED	FACTORY MOUNTED	FACTORY MOUNTED
A	1	UP SIDE MOUNTING PLATE (36" LONG)	FACTORY MOUNTED	FACTORY MOUNTED	-	FACTORY MOUNTED
B	1	UP LEG MOUNTING BRACKET (21-1/4" WIDE)	-	-	FACTORY MOUNTED	-
C	1	DISCHARGE MOUNTING CHANNEL	102-1/4"	102-1/4"	102-1/4"	102-1/4"
D	1	UP LEG MOUNTING CHANNEL	102-1/4"	102-1/4"	102-1/4"	102-1/4"
E	2	SIDE CHANNELS (L & R)	65"	73"	64"	65"
F	1	SIDE PANEL - 38-3/8" WIDE	34-3/4"	42-3/4"	33-3/4"	34-3/4"
G	1	SIDE PANEL WITH DOOR - 38-3/8" WIDE	34-3/4"	42-3/4"	33-3/4" x 40-11/16"	34-3/4"
H	1	REAR PANEL - 28" WIDE	98"	98"	98"	98"
I	2	DOOR STOPS	-	-	20"	-
J	1	DOOR - 27" WIDE WITH SHOULDER BOLTS	-	-	33"	-
K	6	CORNER POST - 2-3/16" x 2-3/16"	42"	42"	42"	42"
L	4	SIDE HANDRAIL	62-7/8"	70-7/8"	61-7/8"	62-7/8"
M	4	FRONT HANDRAIL	38-15/16"	38-15/16"	38-15/16"	38-15/16"
N	2	REAR HANDRAIL	98"	98"	98"	98"
O	2	HANDRAIL SUPPORT BRACKETS	3" L-SHAPED	3" L-SHAPED	5" L-SHAPED	4" L-SHAPED
P	1	REAR KICK PLATE	21"	21"	-	21"
Q	2	SIDE KICK PLATE	34-7/16"	42-7/16"	-	34-7/16"
S	2	LONG DOOR STOPS	31-1/2"	31-1/2"	-	31-1/2"
R	1	DOOR 30" WIDE WITH SHOULDER BOLTS	25"	25"	-	25"
	150	3/8" NC x 1" LONG HEX HEAD BOLTS				
	150	3/8" FLAT WASHERS				
	150	3/8" NC FLANGE NUTS				
				WORK PLATFORM HARDWARE BOX		

SECTION 2 - WORK PLATFORM ASSEMBLY

DIMENSIONS - MODELS #6, #10, CS101 AND CS161



MODEL #6



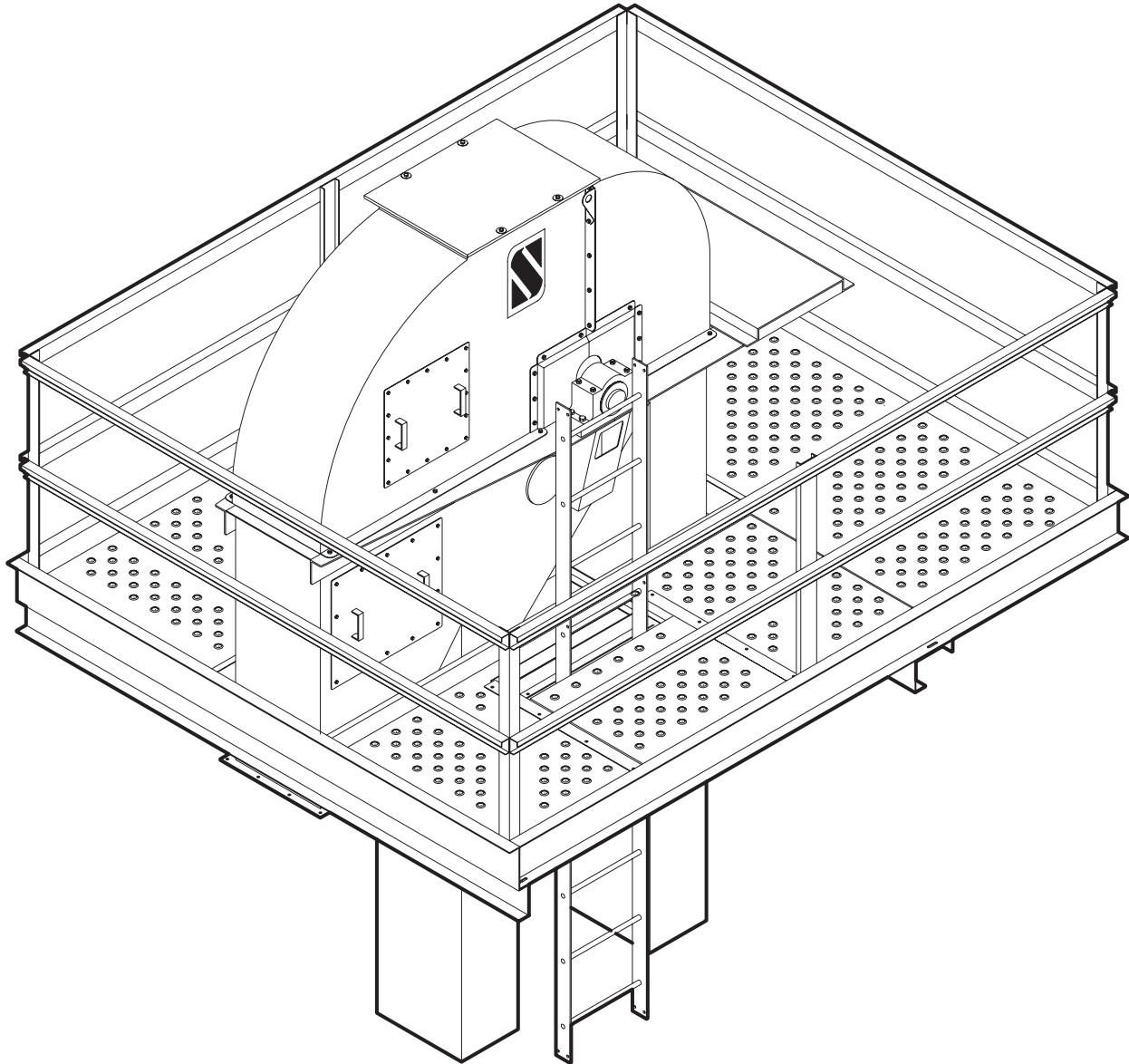
MODEL #10, CS101, & CS161

NOTE: SHOWN AS A RIGHT HAND DRIVE
 (LAYOUT WOULD BE A MIRROR IMAGE WITH A LEFT HAND DRIVE ARRANGEMENT.)

MODEL	A	B	C	D	E	F	G	H	I	J	K	L	M	N	O
6	65-1/8"	102-1/4"	28-1/8"	27"	40-11/16"	9-1/4"	98"	33-3/4"	22-1/4"	2-5/16"	9-1/4"	3-11/16"	1-1/8"	2-1/8"	17-3/8"
10	66-1/8"	102-1/4"	28-1/8"	38-3/8"	38-3/8"	11-1/4"	98"	34-3/4"	26-1/4"	2-5/16"	6-3/16"	5"	1-1/8"	2-1/8"	-
CS101	66-1/8"	102-1/4"	28-1/8"	38-3/8"	38-3/8"	13-1/2"	98"	34-3/4"	26-1/4"	2-5/16"	6-3/16"	3-7/8"	1-1/8"	2-1/8"	-
CS161	74-1/8"	102-1/4"	28-1/8"	38-3/8"	38-3/8"	13-1/2"	98"	42-3/4"	34-1/4"	2-5/16"	6-3/16"	3-7/8"	1-1/8"	2-1/8"	-

WORK PLATFORM ASSEMBLY

MODELS #16 - #48



LADDER AND PLATFORM ARRANGEMENT FOR RIGHT HAND DRIVE.
(FOR "LEFT HAND" DRIVE THE ASSEMBLY WOULD BE THE MIRROR IMAGE OF THIS ARRANGEMENT.)

SECTION 2 - WORK PLATFORM ASSEMBLY

ASSEMBLY OF BASIC COMPONENTS

NOTE - Hand tighten all bolts until platform is assembled before being fully tightened.

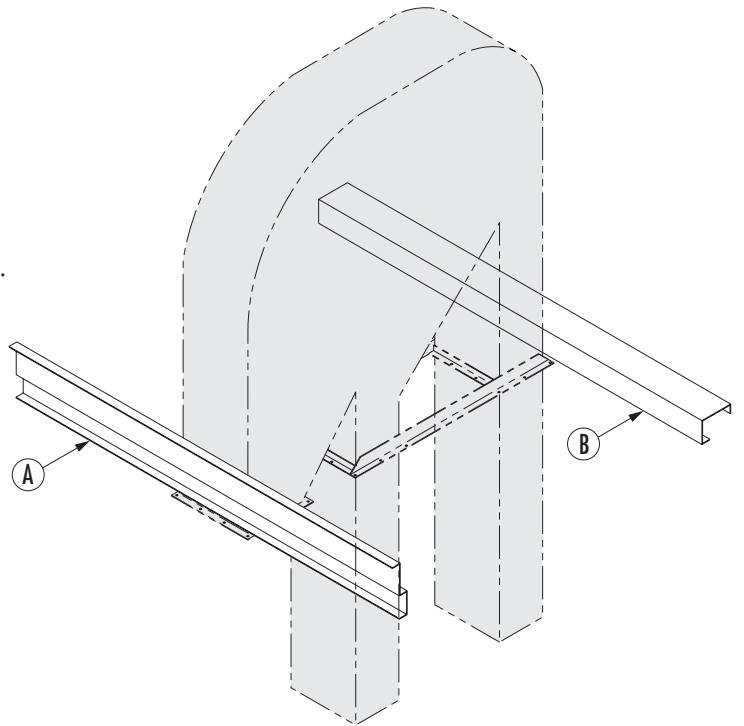
Shown as a right hand drive.

NOTE - Reference drawing page 8 and bill of materials list on page 11.

STEP 1

1. Bolt front channel (A) to 4 holes in head discharge.
2. Bolt rear channel (B) to 4 holes in the back of up side leg.

NOTE - Use 1/2" hardware for mounting channels to leg.



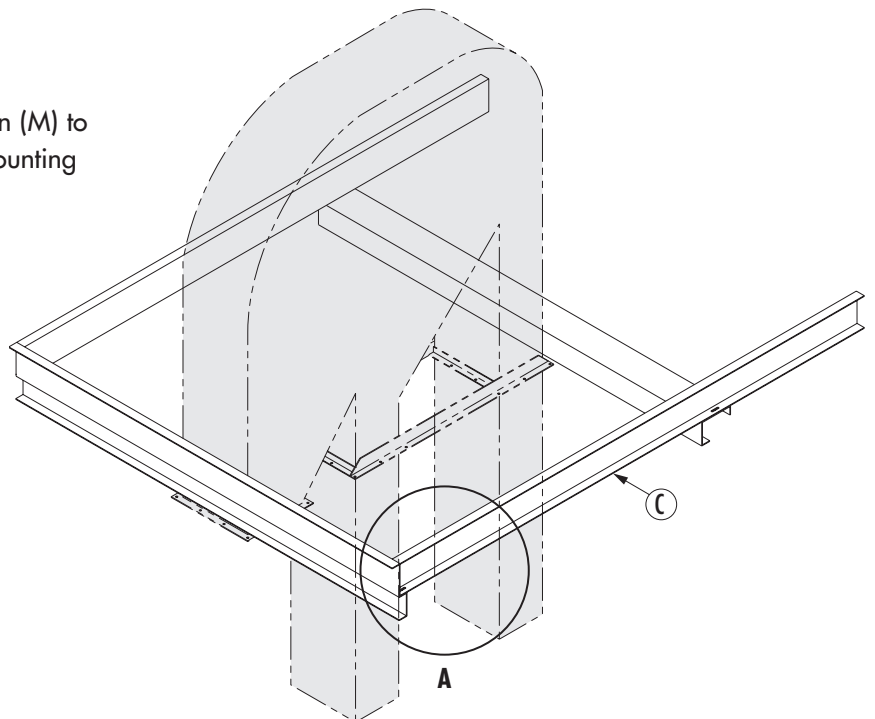
STEP 2

1. Place side channel (C) on front channel (A) and rear channel (B).

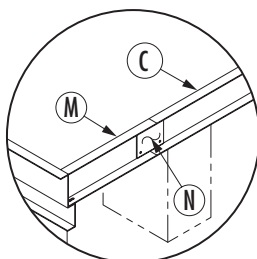
NOTE - Left and right sides

Models 42 & 48: Mount side channel extension (M) to side channel (C) with splice plate (N) before mounting to front channel (A) and rear channel (B).

See Detail A.



MODELS 42 & 48 ONLY



DETAIL A

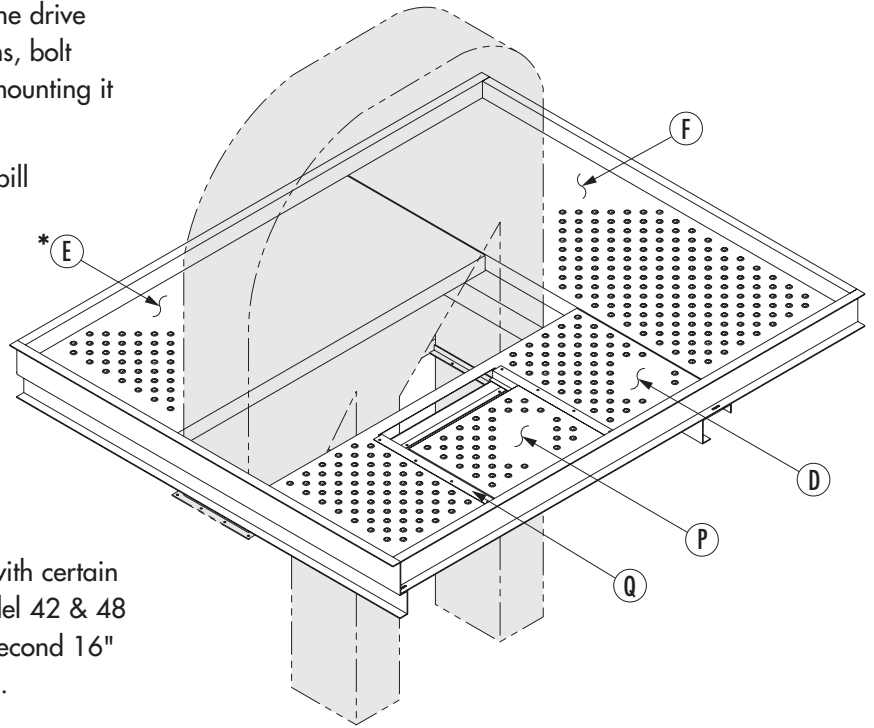
STEP 3

1. Bolt in side panel with door (D) opposite the drive side of leg. For model 42 and 48 platforms, bolt stiffener channels (R) to panel (D) before mounting it to the support frame.

NOTE - Reference drawings on page 8 and bill of materials list on page 11.

2. Bolt in door stops (P) and door (Q) to panel (D).
3. Bolt in side panel (E). For model 42 and 48 platforms, bolt stiffener channels (S) to panel (E) before mounting it to the support frame.
4. Bolt in the rear panel (F).

***NOTE** - Model 30 & 36 platforms for legs with certain large drives use a 48-3/8" wide panel. Model 42 & 48 platforms for certain large drives there is a second 16" wide panel. See bill of materials on page 11.

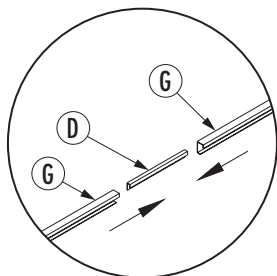
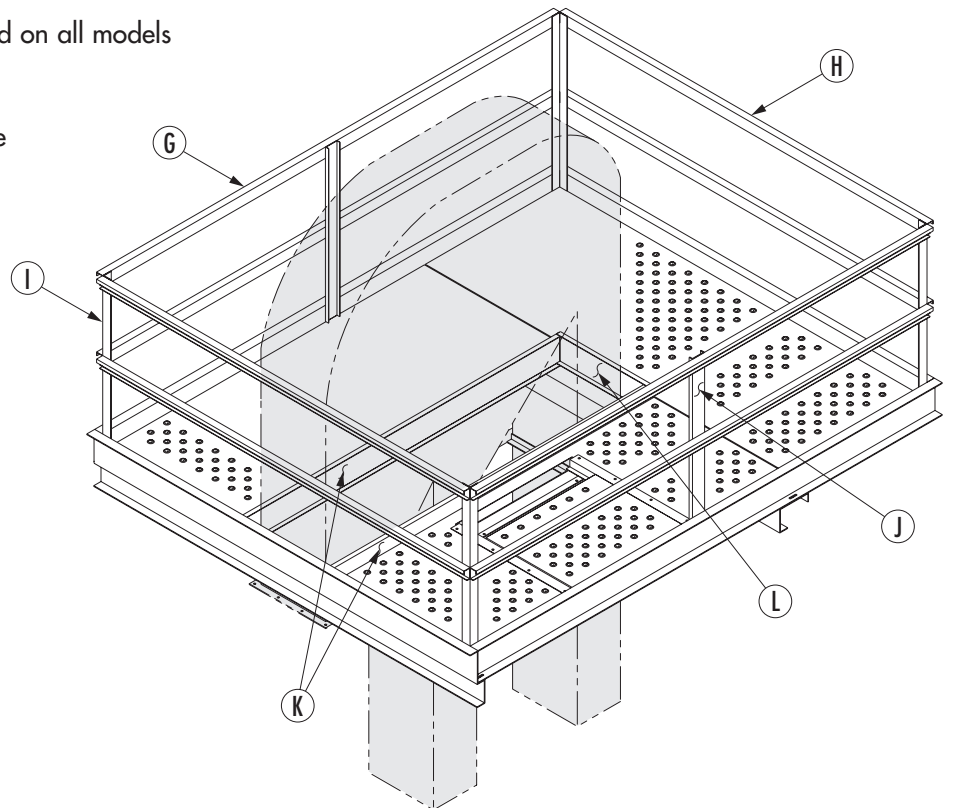


STEP 4

1. Bolt on kick plates (K & L).
2. Bolt on corner post (I).
3. Bolt on center post (J). *Not required on all models
4. Bolt on handrails (G & H).

Model 42 & 48: Mount handrail splice (O) between side handrail (G).

See Detail B.



DETAIL B

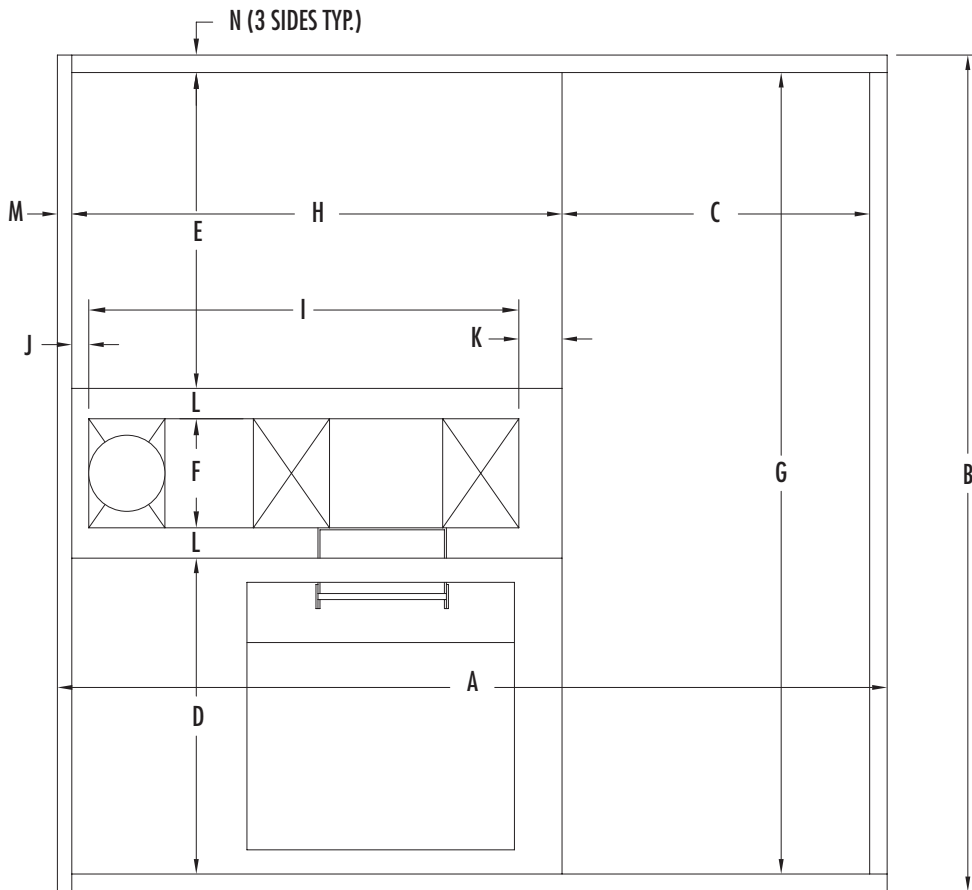
SECTION 2 - WORK PLATFORM ASSEMBLY

BILL OF MATERIALS - MODELS #16 - #48

PART I.D.	QTY.	DESCRIPTION	MODELS						
			16	20	24	30	36	42	48
A	1	DISCHARGE END MOUNTING CHANNEL	101-5/8"	103-5/8"	103-5/8"	106-5/8"	106-5/8"	123-5/8"	123-5/8"
*A ₁	1	DISCHARGE END MOUNTING CHANNEL	-	-	-	116-5/8"	116-5/8"	139-5/8"	139-5/8"
B	1	UP LEG MOUNTING CHANNEL	101-5/8"	103-5/8"	103-5/8"	106-5/8"	106-5/8"	123-5/8"	123-5/8"
*B ₁	1	UP LEG MOUNTING CHANNEL	-	-	-	116-5/8"	116-5/8"	139-5/8"	139-5/8"
C	2	SIDE CHANNELS (L & R)	99-1/8"	109-1/8"	113-1/8"	129-1/8"	141-1/8"	120"	120"
D	1	SIDE PANEL WITH DOOR - 38-3/8" WIDE	59-1/2"	69-1/2"	73-1/2"	89-1/2"	101-1/2"	115-1/2"	127-1/2"
E	1	SIDE PANEL - 38-3/8" WIDE	59-1/2"	69-1/2"	73-1/2"	89-1/2"	101-1/2"	-	-
	1	SIDE PANEL - 50-3/8" WIDE	-	-	-	-	-	115-1/2"	127-1/2"
*E ₁	1	SIDE PANEL - 48-3/8" WIDE	-	-	-	89-1/2"	101-1/2"	-	-
	1	SIDE PANEL - 16" WIDE	-	-	-	-	-	115-1/2"	127-1/2"
F	1	REAR PANEL - 39-1/2" WIDE	97-3/8"	99-3/8"	99-3/8"	102-3/8"	102-3/8"	-	-
	1	REAR PANEL - 51-1/2" WIDE	-	-	-	-	-	119-3/8"	119-3/8"
G	4	SIDE HANDRAIL	97"	107"	111"	127"	139"	-	-
	8		-	-	-	-	-	82-5/8"	88-3/16"
H	4	FRONT & REAR HANDRAIL	97-3/8"	99-3/8"	99-3/8"	102-3/8"	102-3/8"	119-3/8"	119-3/8"
*H ₁	4	FRONT & REAR HANDRAIL	-	-	-	112-3/8"	112-3/8"	135-3/8"	135-3/8"
I	4	CORNER POST - 2-3/16" x 2-3/16"	42"	42"	42"	42"	42"	42"	42"
J	2	CENTER POST - 3-1/4" WIDE	-	-	-	42"	42"	-	-
	4		-	-	-	-	-	42"	42"
K	2	SIDE KICK PLATE	59-5/16"	69-5/16"	73-5/16"	89-5/16"	101-5/16"	115-5/16"	127-5/16"
L	1	REAR KICK PLATE	22-1/8"	24-1/8"	24-1/8"	25-3/8"	25-3/8"	30-3/8"	30-3/8"
M	2	SIDE CHANNEL EXTENSION	-	-	-	-	-	47-1/8"	59-1/8"
N	2	SPLICE PLATE	-	-	-	-	-	7-3/8" SQ.	7-3/8" SQ.
O	4	HANDRAIL SPLICE	-	-	-	-	-	16"	16"
P	2	DOOR STOPS - 2-1/4" WIDE	32"	32"	32"	32"	32"	32"	32"
Q	1	DOOR	30" x 25"	30" x 25"	30" x 25"	30" x 25"	30" x 25"	30" x 25"	30" x 25"
R	2	STIFFENER CHANNEL - 3-3/8" x 2-3/16"	-	-	-	-	-	38"	38"
S	2	STIFFENER CHANNEL - 3-3/8" x 2-3/16"	-	-	-	-	-	50"	50"
	150	3/8" NC x 1" LONG HEX HEAD BOLTS	WORK PLATFORM HARDWARE BOX						
	150	3/8" FLAT WASHERS							
	150	3/8" NC FLANGE NUTS							
	12	1/2" NC x 1-1/4" LONG HEX HEAD BOLTS							
	12	1/2" FLAT WASHERS							
	12	1/2" NC FLANGE NUTS							

*NOTE: USED ON PLATFORMS FOR #30 AND LARGER BUCKET ELEVATORS USING CERTAIN LARGE DRIVES.

DIMENSIONS - MODELS #16 - #48



NOTE: SHOWN AS A RIGHT HAND DRIVE
 (LAYOUT WOULD BE A MIRROR IMAGE WITH A LEFT HAND DRIVE ARRANGEMENT.)

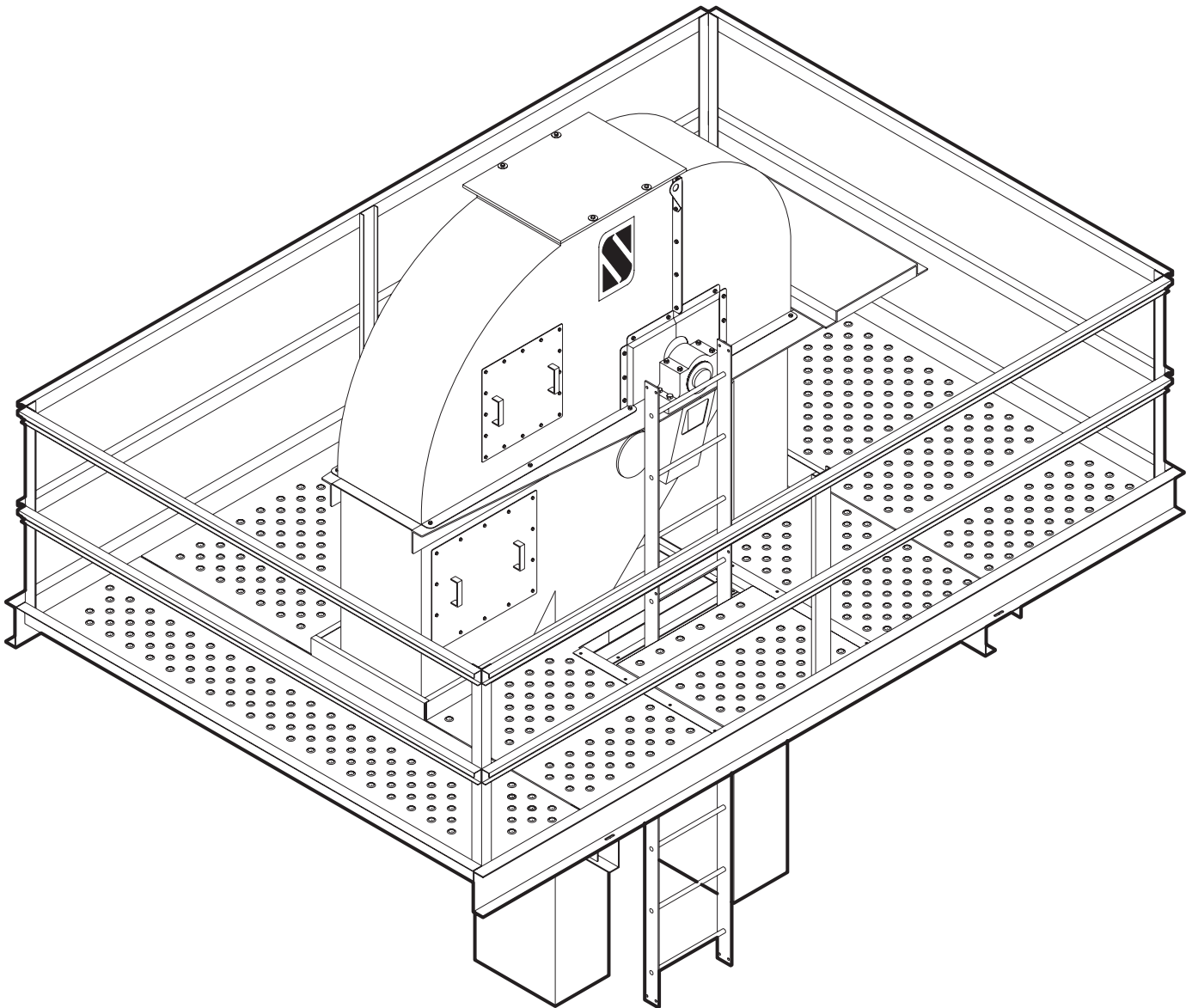
MODEL	A	B	C	D	E	F	G	H	I	J	K	L	M	N
16	100-3/16"	101-5/8"	37-3/8"	38-3/8"	38-3/8"	13-1/4"	97-3/8"	59-9/16"	52-1/4"	2-1/16"	5-1/4"	3-11/16"	1-1/8"	2-1/8"
20	110-3/16"	103-5/8"	37-3/8"	38-3/8"	38-3/8"	15-1/4"	99-3/8"	69-9/16"	62-1/4"	2-1/16"	5-1/4"	3-11/16"	1-1/8"	2-1/8"
24	114-3/16"	103-5/8"	37-3/8"	38-3/8"	38-3/8"	15-1/4"	99-3/8"	73-9/16"	66-1/4"	2-1/16"	5-1/4"	3-11/16"	1-1/8"	2-1/8"
30	130-3/16"	106-5/8"	37-3/8"	38-3/8"	38-3/8"	18-1/4"	102-3/8"	89-9/16"	82-1/4"	2-1/16"	5-1/4"	3-11/16"	1-1/8"	2-1/8"
36	142-3/16"	106-5/8"	37-3/8"	38-3/8"	38-3/8"	18-1/4"	102-3/8"	101-9/16"	94-1/4"	2-1/16"	5-1/4"	3-11/16"	1-1/8"	2-1/8"
42	168-3/16"	123-5/8"	49-3/8"	38-3/8"	50-3/8"	23-1/4"	119-3/8"	115-9/16"	108-1/4"	2-1/16"	5-1/4"	3-11/16"	1-1/8"	2-1/8"
48	180-3/16"	123-5/8"	49-3/8"	38-3/8"	50-3/8"	23-1/4"	119-3/8"	127-9/16"	120-1/4"	2-1/16"	5-1/4"	3-11/16"	1-1/8"	2-1/8"

*NOTE: ADD 16" TO DIMENSIONS B, E AND G FOR BUCKET ELEVATOR MODELS #42 AND #48 USING CERTAIN LARGE DRIVES.

**NOTE: ADD 10" TO DIMENSIONS B, E AND G FOR BUCKET ELEVATOR MODELS #30 AND #36 USING CERTAIN LARGE DRIVES.

360° WORK PLATFORM ASSEMBLY

MODELS #16 - #48



LADDER AND PLATFORM ARRANGEMENT FOR RIGHT HAND DRIVE.
(FOR "LEFT HAND" DRIVE THE ASSEMBLY WOULD BE THE MIRROR IMAGE OF THIS ARRANGEMENT.)

ASSEMBLY OF BASIC COMPONENTS

NOTE - Hand tighten all bolts until platform is assembled before being fully tightened.

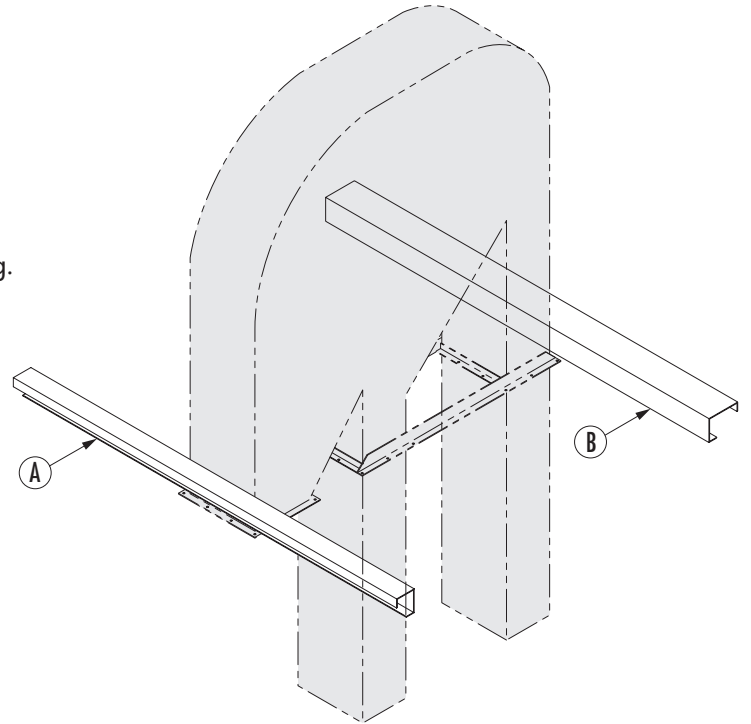
Shown as a right hand drive.

NOTE - Reference drawing page 13 and bill of materials list on page 16.

STEP 1

1. Bolt front channel (A) to 4 holes in head discharge.
2. Bolt rear channel (B) to 4 holes in the back of up side leg.

NOTE - Use 1/2" hardware for mounting channels to leg.

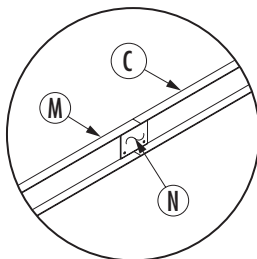
**STEP 2**

1. Place side channel (C) on front channel (A) and rear channel (B).

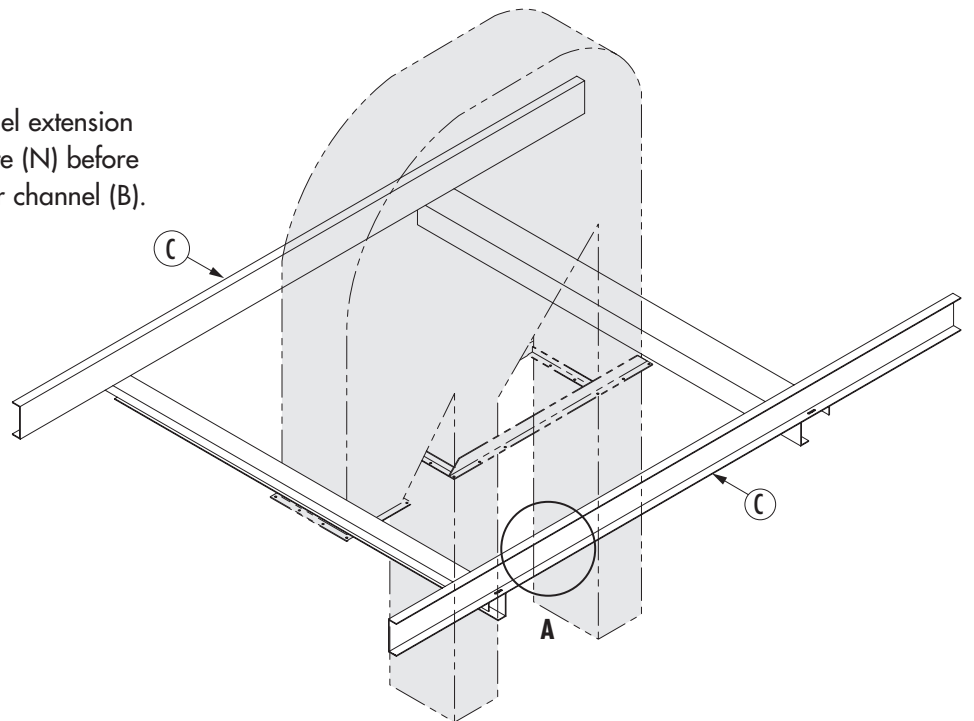
NOTE - Left and right sides

Models 30 and up: Mount side channel extension (M) to side channel (C) with splice plate (N) before mounting to front channel (A) and rear channel (B).

See Detail A.

MODELS 30 AND UP

DETAIL A



SECTION 2 - WORK PLATFORM ASSEMBLY

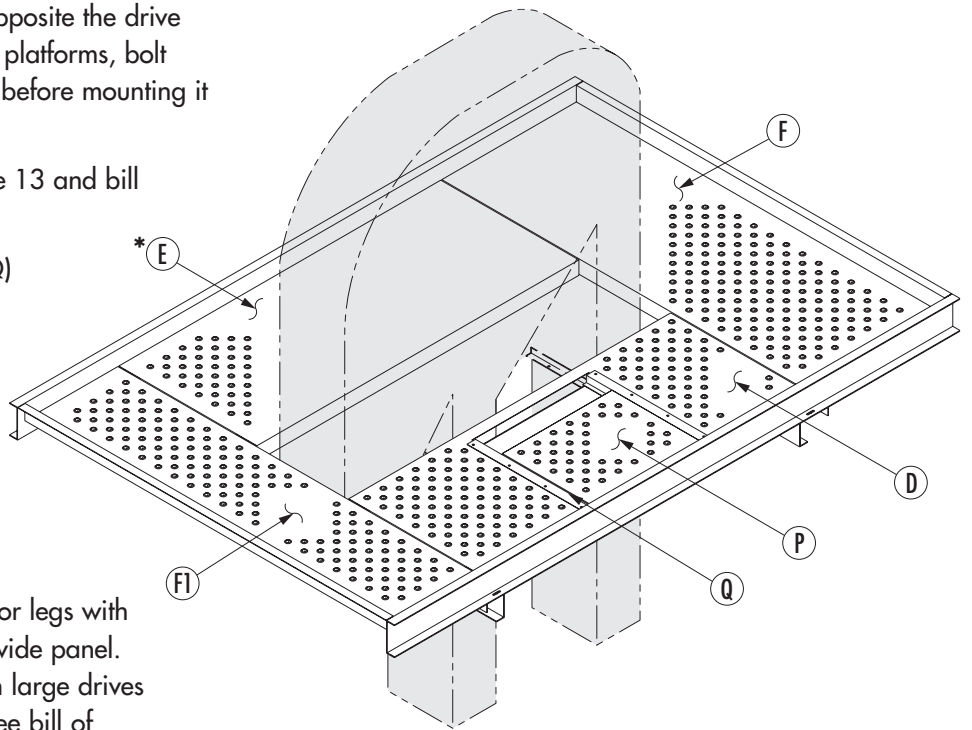
STEP 3

1. Bolt in side panel with door (D) opposite the drive side of leg. For model 42 and 48 platforms, bolt stiffener channels (R) to panel (D) before mounting it to the support frame.

NOTE - Reference drawings on page 13 and bill of materials list on page 16.

2. Bolt in door stops (P) and door (Q) to panel (D).
3. Bolt in side panel (E). For model 42 and 48 platforms, bolt stiffener channels (S) to panel (E) before mounting it to the support frame
4. Bolt in the rear panel (F).

***NOTE** - Model 30 & 36 platforms for legs with certain large drives use a 48-3/8" wide panel. Model 42 & 48 platforms for certain large drives there is a second 16" wide panel. See bill of materials on page 16.

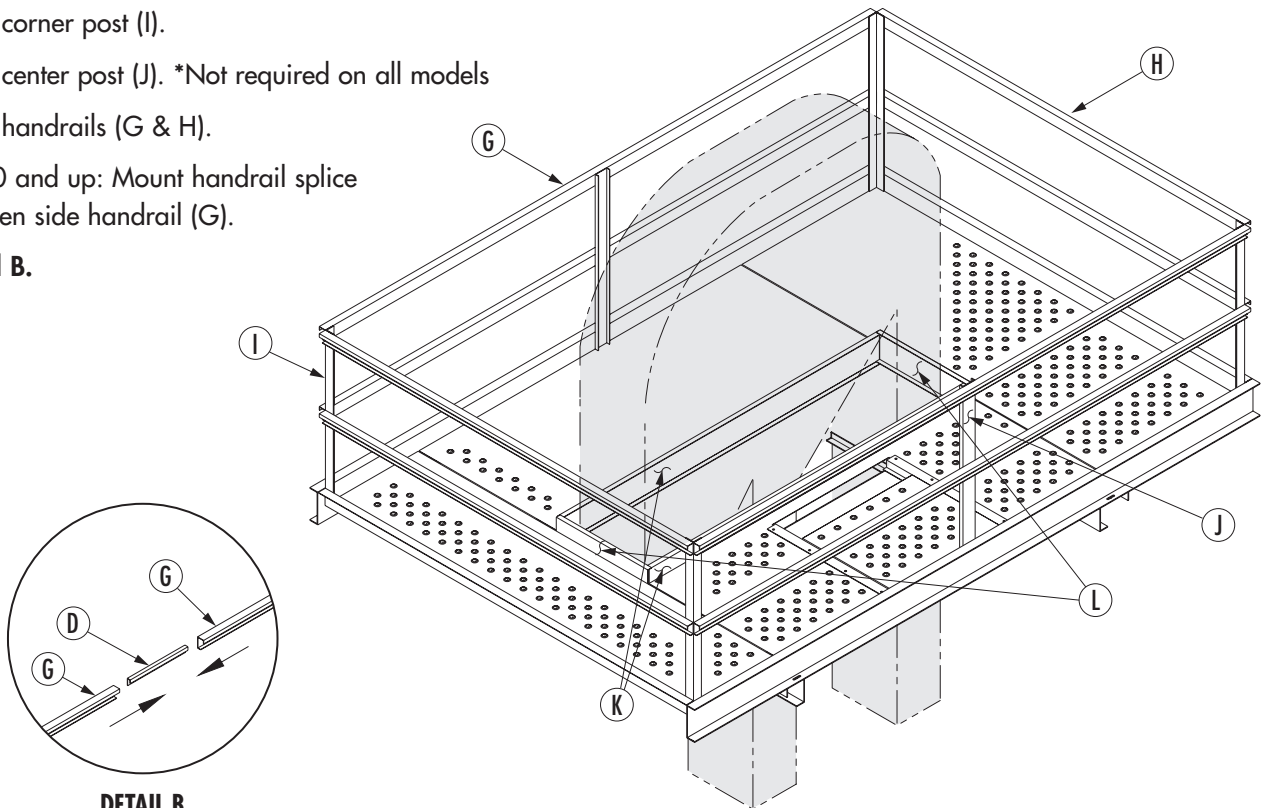


STEP 4

1. Bolt on kick plates (K & L).
2. Bolt on corner post (I).
3. Bolt on center post (J). *Not required on all models
4. Bolt on handrails (G & H).

Models 30 and up: Mount handrail splice (O) between side handrail (G).

See Detail B.



DETAIL B

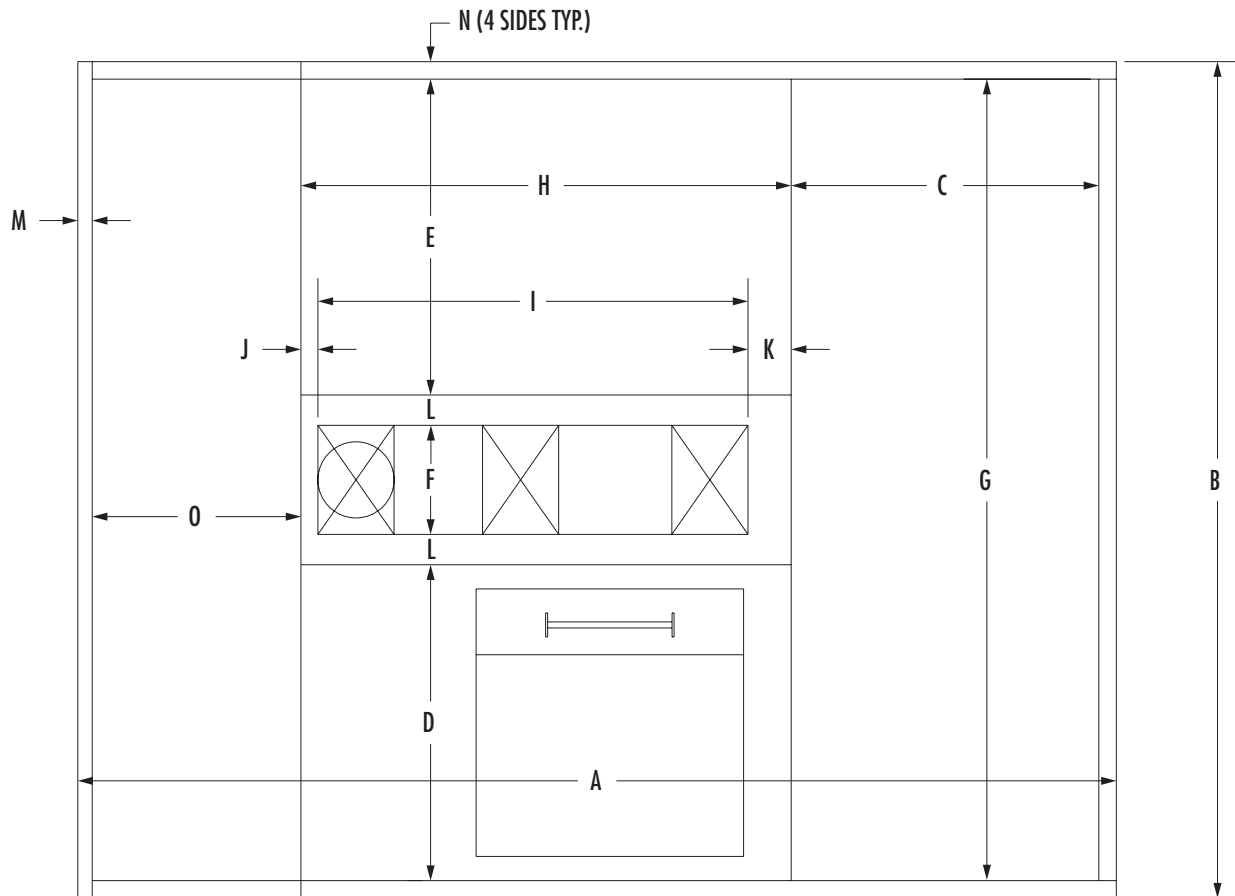
BILL OF MATERIALS - MODELS #16 - #48 - 360° WORK PLATFORM

PART I.D.	QTY.	DESCRIPTION	MODELS						
			16	20	24	30	36	42	48
A	1	DISCHARGE END MOUNTING CHANNEL	101-5/8"	103-5/8"	103-5/8"	106-5/8"	106-5/8"	123-5/8"	123-5/8"
*A ₁	1	DISCHARGE END MOUNTING CHANNEL	-	-	-	116-5/8"	116-5/8"	139-5/8"	139-5/8"
B	1	UP LEG MOUNTING CHANNEL	101-5/8"	103-5/8"	103-5/8"	106-5/8"	106-5/8"	123-5/8"	123-5/8"
*B ₁	1	UP LEG MOUNTING CHANNEL	-	-	-	116-5/8"	116-5/8"	139-5/8"	139-5/8"
C	2	SIDE CHANNELS (L & R)	127"	137"	141"	120"	120"	120"	120"
D	1	SIDE PANEL WITH DOOR - 38-3/8" WIDE	59-1/2"	69-1/2"	73-1/2"	89-1/2"	101-1/2"	115-1/2"	127-1/2"
E	1	SIDE PANEL - 38-3/8" WIDE	59-1/2"	69-1/2"	73-1/2"	89-1/2"	101-1/2"	-	-
	1	SIDE PANEL - 50-3/8" WIDE	-	-	-	-	-	115-1/2"	127-1/2"
*E ₁	1	SIDE PANEL - 48-3/8" WIDE	-	-	-	89-1/2"	101-1/2"	-	-
	1	SIDE PANEL - 16" WIDE	-	-	-	-	-	115-1/2"	127-1/2"
F	1	REAR PANEL - 39-1/2" WIDE	97-3/8"	99-3/8"	99-3/8"	102-3/8"	102-3/8"	-	-
	1	REAR PANEL - 51-1/2" WIDE	-	-	-	-	-	119-3/8"	119-3/8"
*F ₁	1	FRONT PANEL - 25 5/8" WIDE	97-3/8"	99-3/8"	99-3/8"	102-3/8"	102-3/8"	119-3/8"	119-3/8"
G	4	SIDE HANDRAIL	124-7/8"	134-7/8"	138-7/8"	-	-	-	-
	8		-	-	-	77-7/16"	83-7/16"	95-1/2"	101-1/2"
H	4	FRONT & REAR HANDRAIL	97-3/8"	99-3/8"	99-3/8"	102-3/8"	102-3/8"	119-3/8"	119-3/8"
*H ₁	4	FRONT & REAR HANDRAIL	-	-	-	112-3/8"	112-3/8"	135-3/8"	135-3/8"
I	4	CORNER POST - 2-3/16" x 2-3/16"	42"	42"	42"	42"	42"	42"	42"
J	2	CENTER POST - 3-1/4" WIDE	-	-	-	42"	42"	-	-
	4		-	-	-	-	-	42"	42"
K	2	SIDE KICK PLATE	59-5/16"	69-5/16"	73-5/16"	89-5/16"	101-5/16"	115-5/16"	127-5/16"
L	1	REAR KICK PLATE	22-1/8"	24-1/8"	24-1/8"	25-3/8"	25-3/8"	30-3/8"	30-3/8"
M	2	SIDE CHANNEL EXTENSION	-	-	-	37"	49"	75"	47-1/8"
N	2	SPLICE PLATE	-	-	-	7-3/8" SQ.	7-3/8" SQ.	7-3/8" SQ.	7-3/8" SQ.
O	4	HANDRAIL SPLICE	-	-	-	16"	16"	16"	16"
P	2	DOOR STOPS - 2-1/4" WIDE	32"	32"	32"	32"	32"	32"	32"
Q	1	DOOR	30" x 25"	30" x 25"	30" x 25"	30" x 25"	30" x 25"	30" x 25"	30" x 25"
R	2	STIFFENER CHANNEL - 3-3/8" x 2-3/16"	-	-	-	-	-	38"	38"
S	2	STIFFENER CHANNEL - 3-3/8" x 2-3/16"	-	-	-	-	-	50"	50"
	150	3/8" NC x 1" LONG HEX HEAD BOLTS	WORK PLATFORM HARDWARE BOX						
	150	3/8" FLAT WASHERS							
	150	3/8" NC FLANGE NUTS							
	12	1/2" NC x 1-1/4" LONG HEX HEAD BOLTS							
	12	1/2" FLAT WASHERS							
	12	1/2" NC FLANGE NUTS							

*NOTE: USED ON PLATFORMS FOR #30 AND LARGER BUCKET ELEVATORS USING CERTAIN LARGE DRIVES.

SECTION 2 - WORK PLATFORM ASSEMBLY

DIMENSIONS - MODELS #16 - #48 - 360° WORK PLATFORM



NOTE: SHOWN AS A RIGHT HAND DRIVE
(LAYOUT WOULD BE A MIRROR IMAGE WITH A LEFT HAND DRIVE ARRANGEMENT.)

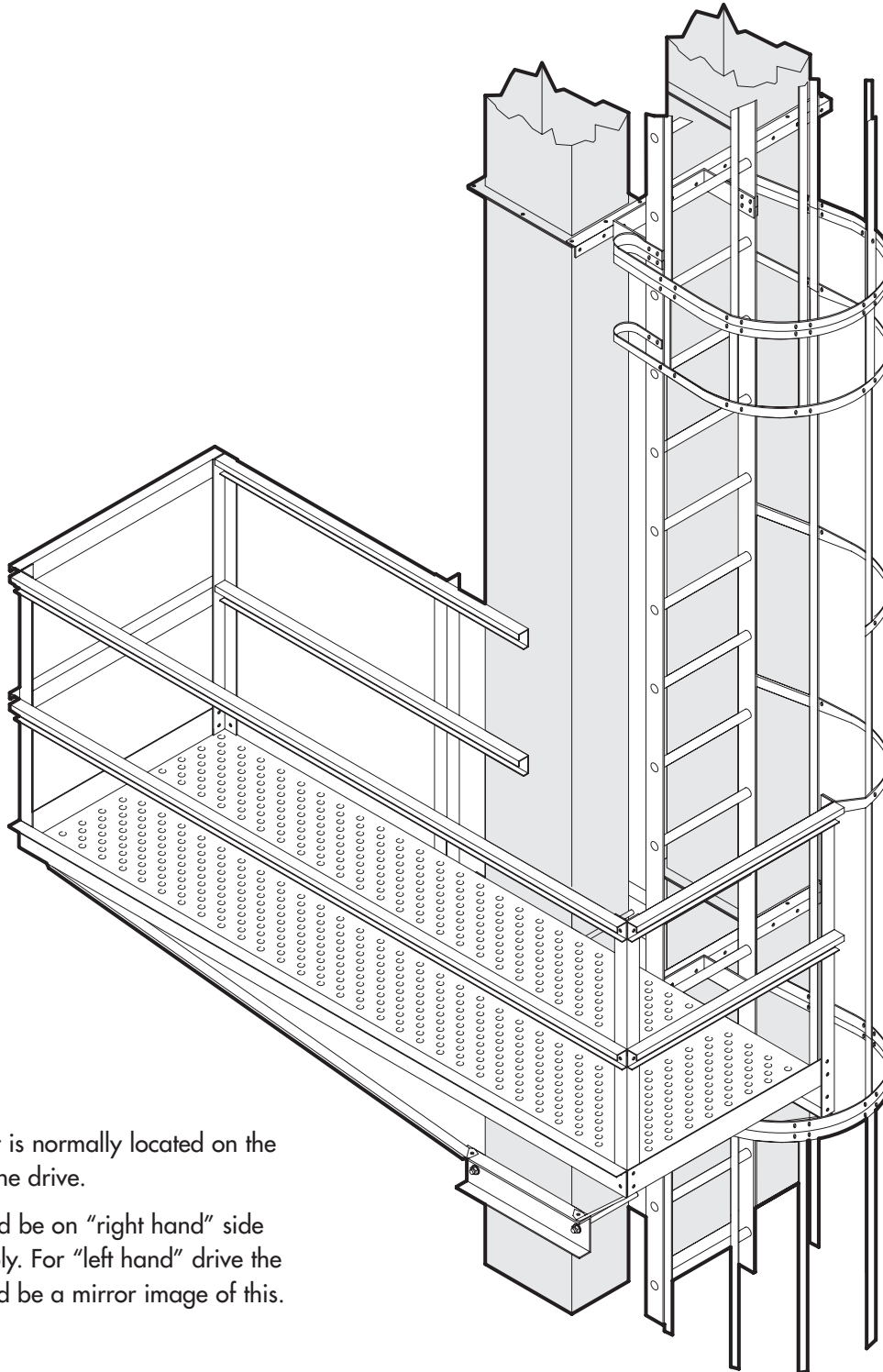
MODEL	A	B	C	D	E	F	G	H	I	J	K	L	M	N	O
16	126-3/16"	101-5/8"	37-3/8"	38-3/8"	38-3/8"	13-1/4"	97-3/8"	59-9/16"	52-1/4"	2-1/16"	5-1/4"	3-11/16"	1-1/8"	2-1/8"	25-1/8"
20	136-3/16"	103-5/8"	37-3/8"	38-3/8"	38-3/8"	15-1/4"	99-3/8"	69-9/16"	62-1/4"	2-1/16"	5-1/4"	3-11/16"	1-1/8"	2-1/8"	25-1/8"
24	140-3/16"	103-5/8"	37-3/8"	38-3/8"	38-3/8"	15-1/4"	99-3/8"	73-9/16"	66-1/4"	2-1/16"	5-1/4"	3-11/16"	1-1/8"	2-1/8"	25-1/8"
30	156-3/16"	106-5/8"	37-3/8"	38-3/8"	38-3/8"	18-1/4"	102-3/8"	89-9/16"	82-1/4"	2-1/16"	5-1/4"	3-11/16"	1-1/8"	2-1/8"	25-1/8"
36	168-3/16"	106-5/8"	37-3/8"	38-3/8"	38-3/8"	18-1/4"	102-3/8"	101-9/16"	94-1/4"	2-1/16"	5-1/4"	3-11/16"	1-1/8"	2-1/8"	25-1/8"
42	194-3/16"	123-5/8"	49-3/8"	38-3/8"	50-3/8"	23-1/4"	119-3/8"	115-9/16"	108-1/4"	2-1/16"	5-1/4"	3-11/16"	1-1/8"	2-1/8"	25-1/8"
48	206-3/16"	123-5/8"	49-3/8"	38-3/8"	50-3/8"	23-1/4"	119-3/8"	127-9/16"	120-1/4"	2-1/16"	5-1/4"	3-11/16"	1-1/8"	2-1/8"	25-1/8"

*NOTE: ADD 16" TO DIMENSIONS B, E AND G FOR BUCKET ELEVATOR MODELS #42 AND #48 USING CERTAIN LARGE DRIVES.

**NOTE: ADD 10" TO DIMENSIONS B, E AND G FOR BUCKET ELEVATOR MODELS #30 AND #36 USING CERTAIN LARGE DRIVES.

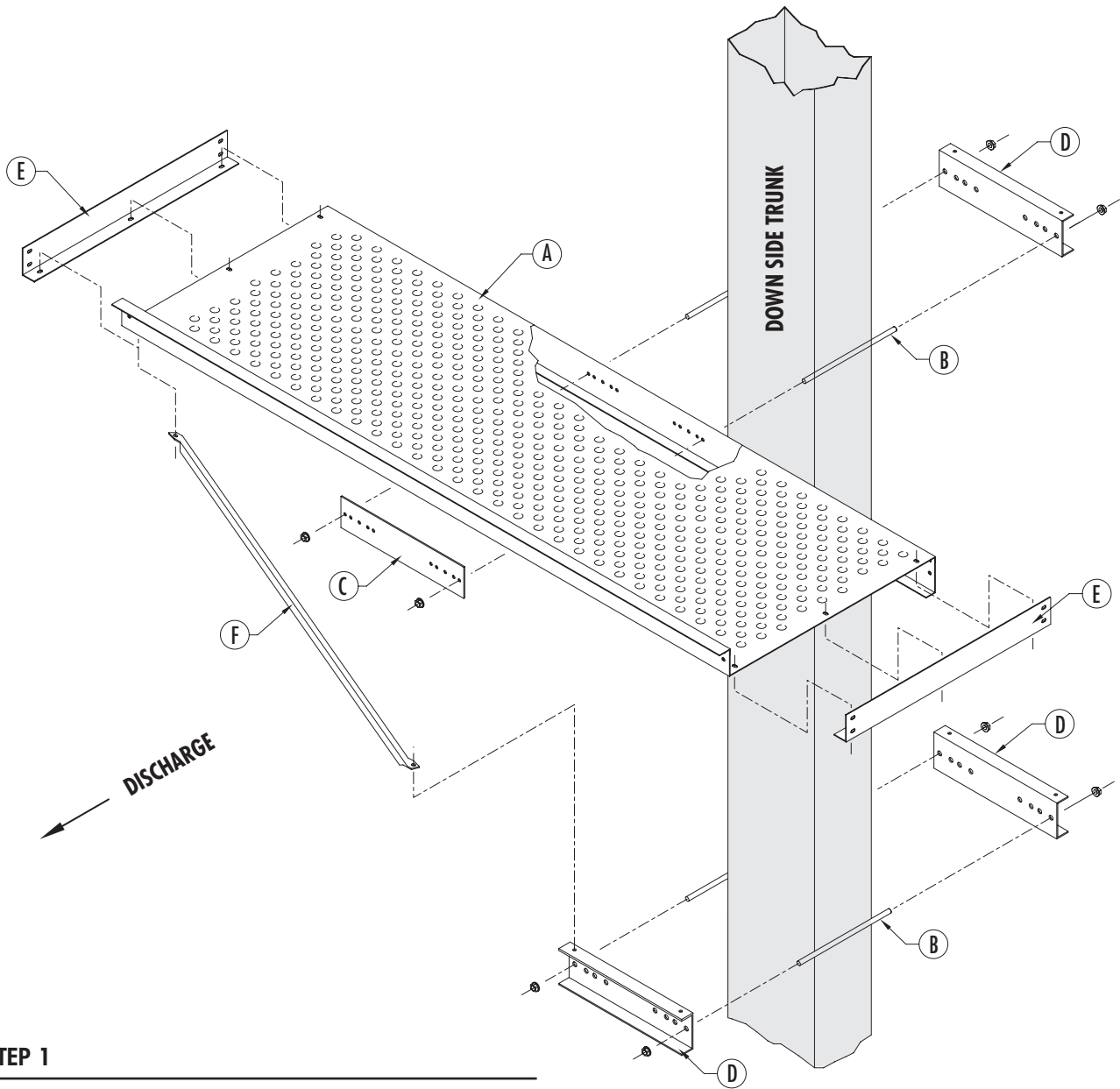
DISTRIBUTOR PLATFORM ASSEMBLY

MODELS CS101, CS161 AND #16 - #48



NOTE - Ladder is normally located on the side opposite the drive.

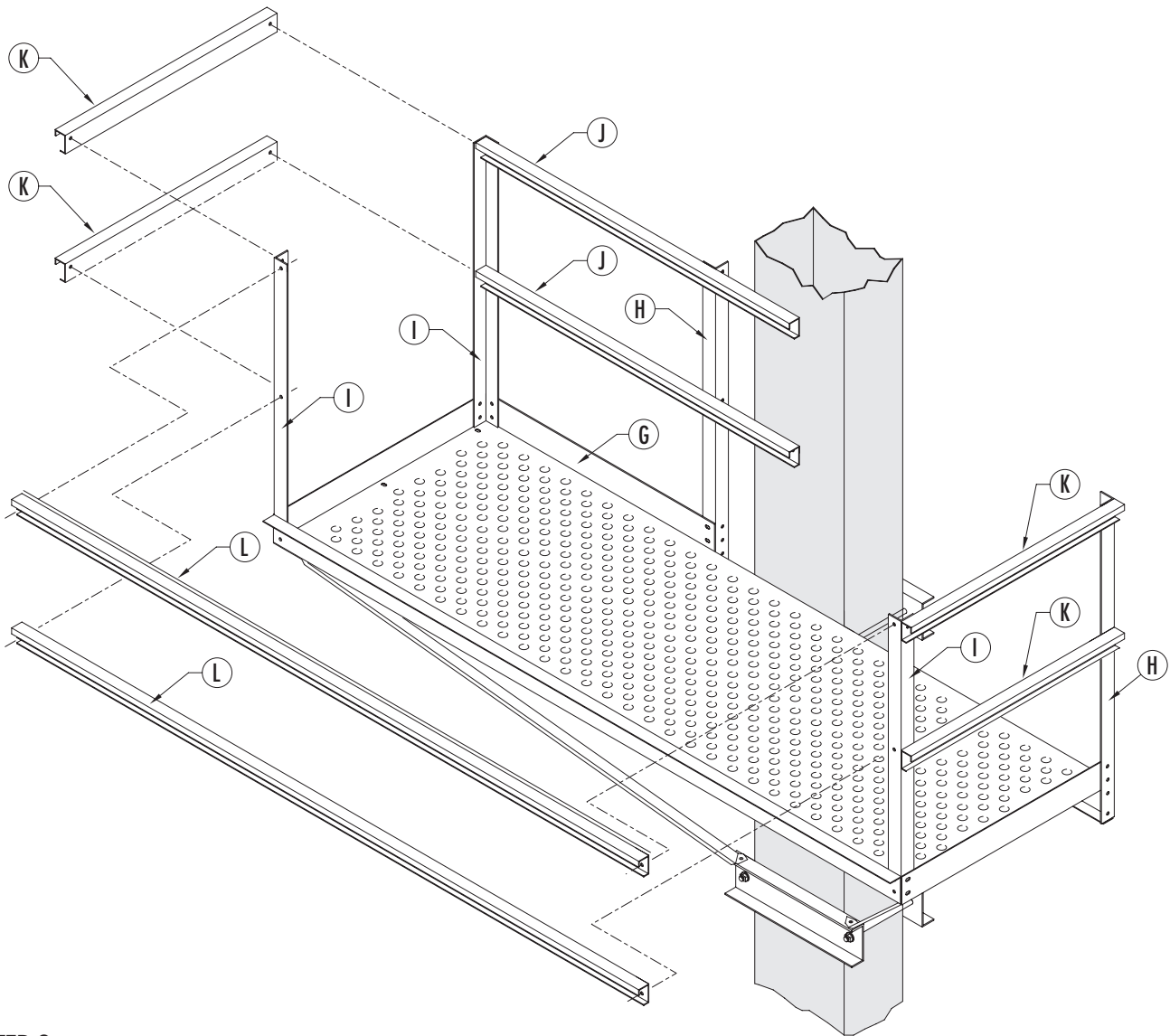
The drive would be on "right hand" side for this assembly. For "left hand" drive the assembly would be a mirror image of this.



STEP 1

1. Using two 5/8" dia. threaded rods (B) with flange nuts, bolt stiffener plate (C), base panel (A), and mounting channel (D), together loose.
2. Using two 5/8" dia. threaded rod with flange nuts, bolt mounting channel (D) around trunking.
3. Bolt end kick plates (E) to base panel (A) using only the 2 holes closest to the trunking.
4. Bolt 2 support braces (F) to mounting channel (D) and base panel (A) using the hole farthest away from trunking.

NOTE - Threaded rod length varies for single trunking.



STEP 2

1. Bolt side kick plate (G) and 1 long corner post (H) on the opposite of the ladder to the base panel (A).
2. Bolt the other long handrail corner post (H) on the ladder side to the base panel (A) using the holes farthest away from trunking.
3. Bolt the three 42" long handrail corner post (I) to the inside of kick plates (A, E, & G).
4. Bolt all the handrails (J, K, & L) to the handrail corner post (H & I).

SECTION 3 - DISTRIBUTOR PLATFORM ASSEMBLY

BILL OF MATERIALS - MODELS #6, #10, CS101 AND CS161

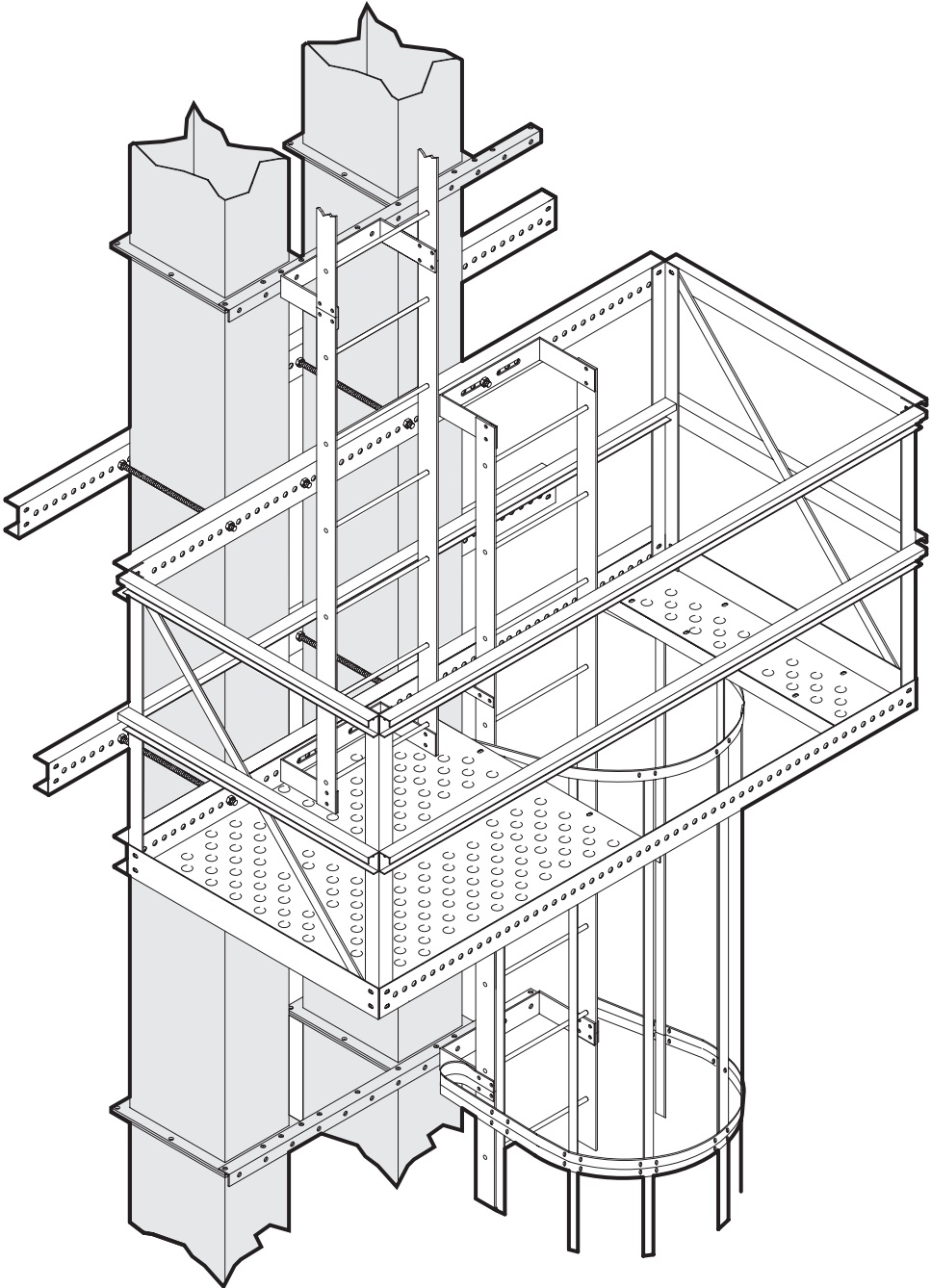
PART I.D.	QTY.	DESCRIPTION	MODELS			
			CS-101	CS-161	#6	#10
A	1	BASE PANEL - 37-1/4" WIDE	107"	107"	107"	107"
	1	BASE PANEL - 49-5/8" WIDE	-	-	-	-
B	4	THREADED ROD - 5/8" DIA.	29"	37"	29"	29"
C	1	STIFFENER PLATE - 4-5/8" WIDE	33"	33"	33"	33"
D	3	MOUNTING CHANNEL - 5-1/4" WIDE	26-5/8"	26-5/8"	26-5/8"	26-5/8"
E	2	END KICK PLATES - 4" WIDE	36"	36"	36"	36"
F	2	SUPPORT BRACES - 2-1/4" WIDE	105"	105"	105"	105"
G	1	SIDE KICK PLATE - 9" WIDE	39"	39"	39"	39"
H	2	LONG CORNER POST - 2-3/16" x 2-3/16"	47"	47"	47"	47"
I	3	CORNER POST - 2-3/16" x 2-3/16"	42"	42"	42"	42"
J	2	REAR HANDRAIL	53-1/2"	53-1/2"	53-1/2"	53-1/2"
K	4	SIDE HANDRAIL	36"	36"	36"	36"
L	2	FRONT HANDRAIL	107"	107"	107"	107"
	8	5/8" NC FLANGE NUTS				
	60	3/8" NC x 1" LONG HEX HEAD BOLT				
	60	3/8" FLAT WASHERS				
	60	3/8" NC FLANGE NUTS				
DISTRIBUTOR PLATFORM HARDWARE BOX						

BILL OF MATERIALS - MODELS #16 - #48

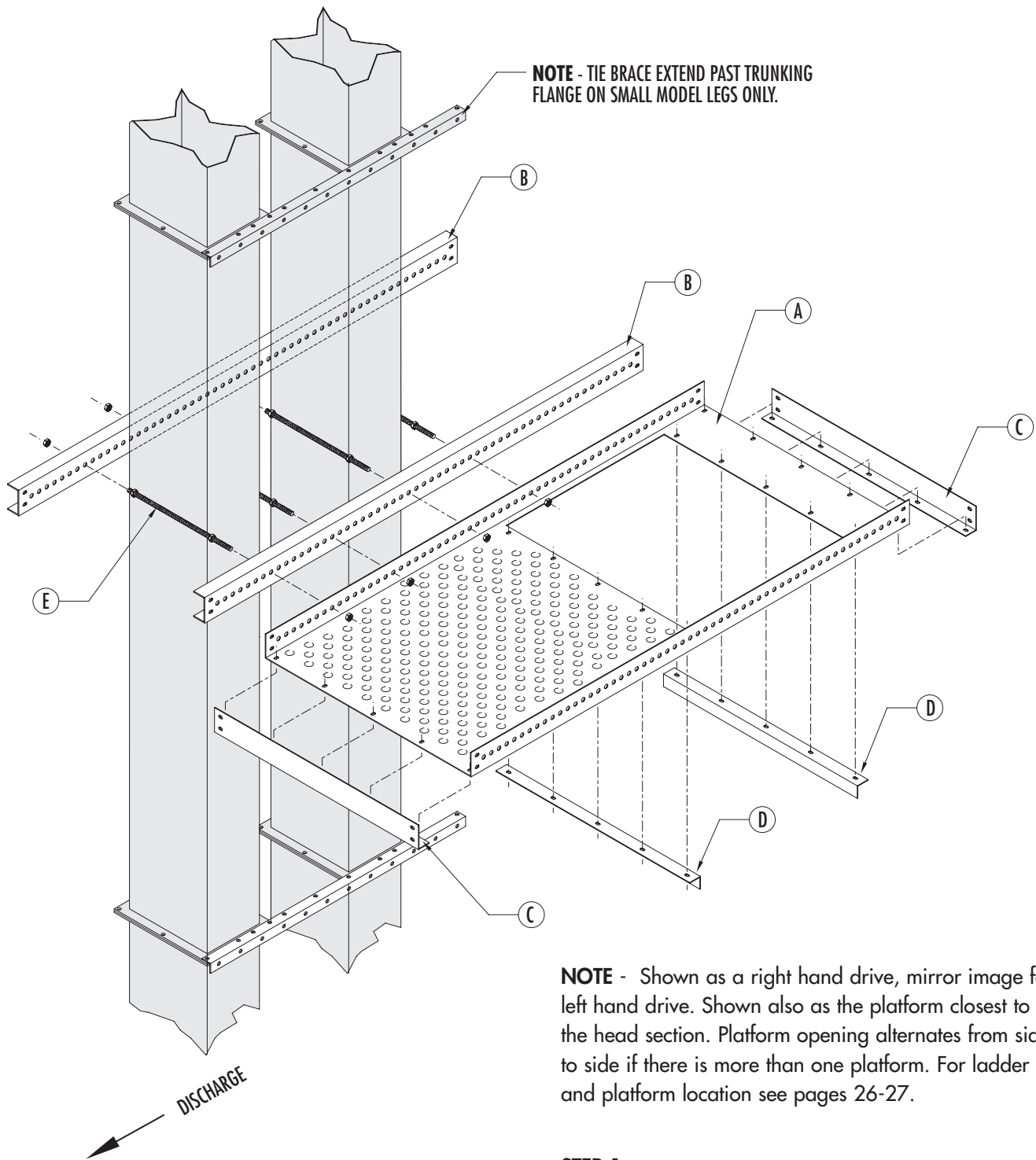
PART I.D.	QTY.	DESCRIPTION	MODELS						
			16	20	24	30	36	42	48
A	1	BASE PANEL - 37-1/4" WIDE	107"	107"	107"	107"	-	-	-
	1	BASE PANEL - 49-5/8" WIDE	-	-	-	-	107"	107"	107"
B	4	THREADED ROD - 5/8" DIA.	16"	16"	16"	16"	16"	16"	16"
C	1	STIFFENER PLATE - 4-5/8" WIDE	33"	33"	33"	33"	33"	33"	33"
D	3	MOUNTING CHANNEL - 5-1/4" WIDE	26-5/8"	26-5/8"	26-5/8"	26-5/8"	26-5/8"	26-5/8"	26-5/8"
E	2	END KICK PLATES - 4" WIDE	36"	36"	36"	36"	48"	48"	48"
F	2	SUPPORT BRACES - 2-1/4" WIDE	105"	105"	105"	105"	105"	105"	105"
G	1	SIDE KICK PLATE - 9" WIDE	39"	39"	39"	39"	39"	39"	39"
H	2	LONG CORNER POST - 2-3/16" x 2-3/16"	47"	47"	47"	47"	47"	47"	47"
I	3	CORNER POST - 2-3/16" x 2-3/16"	42"	42"	42"	42"	42"	42"	42"
J	2	REAR HANDRAIL	53-1/2"	53-1/2"	53-1/2"	53-1/2"	53-1/2"	53-1/2"	53-1/2"
K	4	SIDE HANDRAIL	36"	36"	36"	36"	48"	48"	48"
L	2	FRONT HANDRAIL	107"	107"	107"	107"	107"	107"	107"
	8	5/8" NC FLANGE NUTS							
	60	3/8" NC x 1" LONG HEX HEAD BOLT							
	60	3/8" FLAT WASHERS							
	60	3/8" NC FLANGE NUTS							
DISTRIBUTOR PLATFORM HARDWARE BOX									

REST PLATFORM

MODELS CS101, CS161 AND #16 - #48



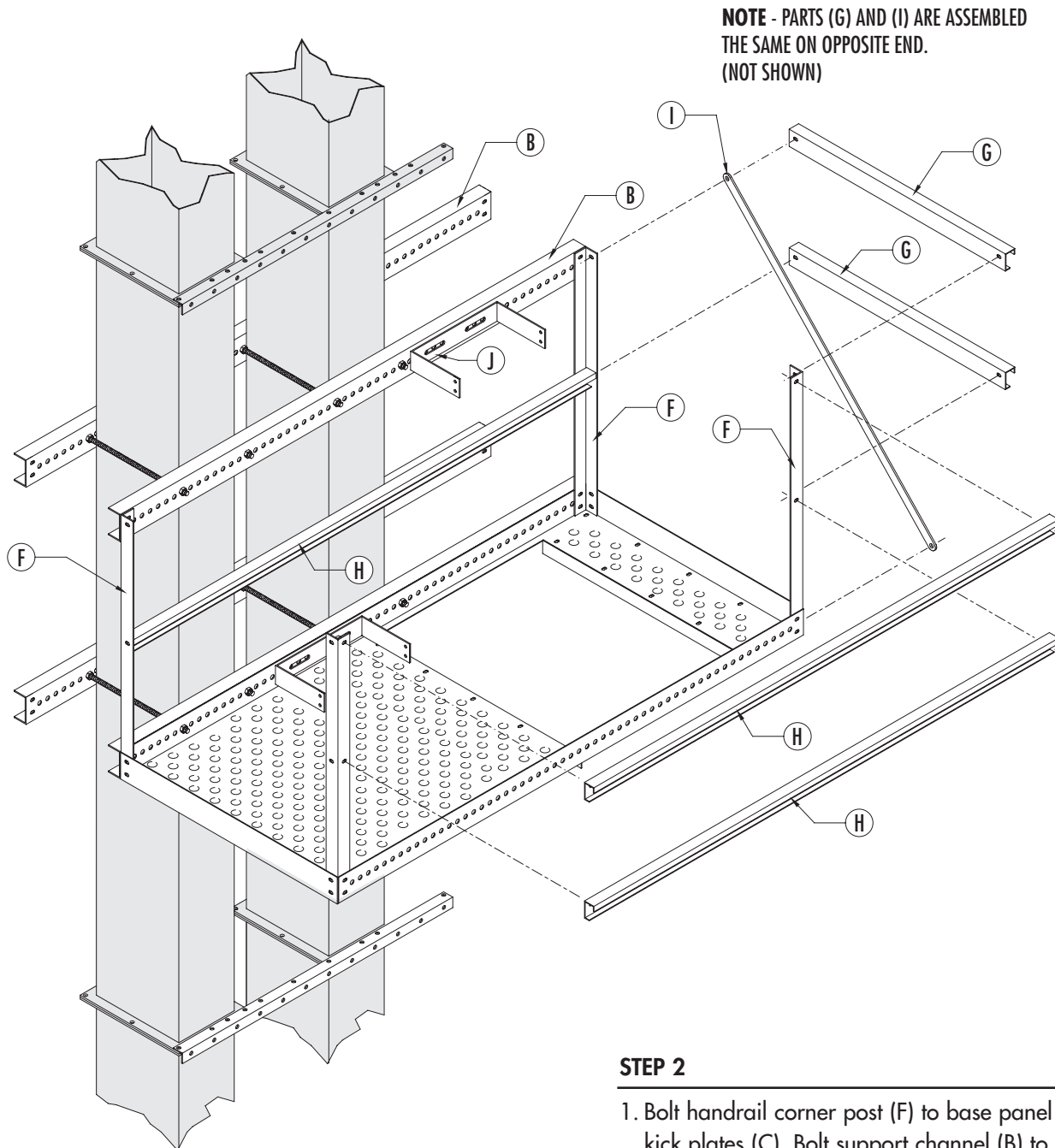
NOTE - Platform is shown mounted to a double trunk style leg, but will work on single trunk legs. Just omit the four threaded rod pieces shown between trunking.



NOTE - Shown as a right hand drive, mirror image for left hand drive. Shown also as the platform closest to the head section. Platform opening alternates from side to side if there is more than one platform. For ladder and platform location see pages 26-27.

STEP 1

1. Assemble two panel support channels (B) and base panel (A) together with four threaded rod (E) and nuts at desired location.
2. Bolt support angles (D) and end kick plates (C) to under side of base panel (A) with carriage bolts.



STEP 2

1. Bolt handrail corner post (F) to base panel (A) and kick plates (C). Bolt support channel (B) to handrail corner post (F). Assemble remaining support channel (B), threaded rod (E), and nuts around trunking
2. Bolt handrails (G), (H) and support straps (I) to handrail corner post (F).
3. Bolt ladder stand-off brackets (J) to support channel (B) where needed with 5/8" bolts, washers, & nuts.

NOTE - Attach ladder to stand-off brackets after platform is located properly. Some field cutting and drilling of ladder may be required.

SECTION 4 - REST PLATFORM ASSEMBLY

BILL OF MATERIALS - MODELS #6, #10, CS101 AND CS161

PART I.D.	QTY.	DESCRIPTION	MODELS			
			CS-101	CS-161	#6	#10
A	1	BASE PANEL - 40 3/8" WIDE	86"	86"	86"	86"
B	4	PANEL SUPPORT CHANNELS - 4" x 2"	86"	86"	86"	86"
C	2	SIDE KICK PLATES - 4-1/8" x 2-1/8"	40-3/16"	40-3/16"	40-3/16"	40-3/16"
D	2	PANEL SUPPORT ANGLES - 2" x 2"	38-3/16"	38-3/16"	38-3/16"	38-3/16"
E	4	5/8" NC THREADED ROD - SINGLE TRUNK	18"	18"	14"	16"
	8	5/8" NC THREADED ROD - DOUBLE TRUNK	-	-	-	-
F	4	CORNER POST - 2-3/16" x 2 -3/16"	42"	42"	42"	42"
G	4	SIDE HANDRAILS	40"	40"	40"	40"
H	3	FRONT & REAR HANDRAILS	86"	86"	86"	86"
I	2	SUPPORT STRAPS - 1-1/4" x 3/16"	55-1/4"	55-1/4"	55-1/4"	55-1/4"
J	2	SPECIAL LADDER STAND-OFF BRACKET - 3"	16" x 9"	16" x 9"	16" x 9"	16" x 9"
	50	3/8" NC x 1" LONG HEX HEAD BOLT				
	20	3/8" NC x 3/4" LONG CARRIAGE BOLT				
	70	3/8" NC FLANGE NUTS				
	4	5/8" NC x 1-1/2" LONG HEX HEAD BOLT			REST PLATFORM HARDWARE BOX	
	36	5/8" NC HEX NUTS				
	36	5/8" LOCK WASHERS				
	36	5/8" FLAT WASHERS				

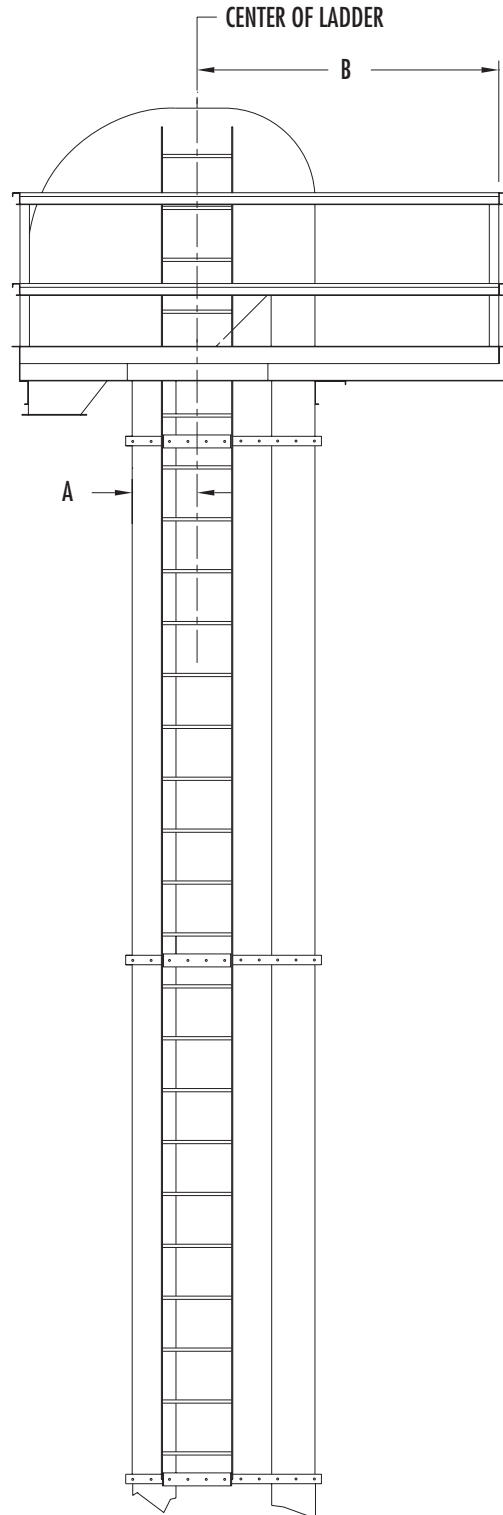
BILL OF MATERIALS - MODELS #16 - #48

PART I.D.	QTY.	DESCRIPTION	MODELS						
			16	20	24	30	36	42	48
A	1	BASE PANEL - 40-3/8" WIDE	86"	86"	86"	86"	86"	86"	86"
B	4	PANEL SUPPORT CHANNELS - 4" x 2"	86"	86"	86"	86"	86"	86"	86"
C	2	SIDE KICK PLATES - 4-1/8" x 2-1/8"	40-3/16"	40-3/16"	40-3/16"	40-3/16"	40-3/16"	40-3/16"	40-3/16"
D	2	PANEL SUPPORT ANGLES - 2" x 2"	38-3/16"	38-3/16"	38-3/16"	38-3/16"	38-3/16"	38-3/16"	38-3/16"
E	4	5/8" NC THREADED ROD - SINGLE TRUNK	-	-	-	-	-	-	-
	8	5/8" NC THREADED ROD - DOUBLE TRUNK	18"	20"	20"	23"	23"	28"	28"
F	4	CORNER POST - 2-3/16" x 2 -3/16"	42"	42"	42"	42"	42"	42"	
G	4	SIDE HANDRAILS	40"	40"	40"	40"	40"	40"	
H	3	FRONT & REAR HANDRAILS	86"	86"	86"	86"	86"	86"	
I	2	SUPPORT STRAPS - 1-1/4" x 3/16"	55-1/4"	55-1/4"	55-1/4"	55-1/4"	55-1/4"	55-1/4"	
J	2	SPECIAL LADDER STAND-OFF BRACKET - 3"	16" x 9"	16" x 9"	16" x 9"	16" x 9"	16" x 9"	16" x 9"	
	50	3/8" NC x 1" LONG HEX HEAD BOLT							
	20	3/8" NC x 3/4" LONG CARRIAGE BOLT							
	70	3/8" NC FLANGE NUTS							
	4	5/8" NC x 1-1/2" LONG HEX HEAD BOLT					REST PLATFORM HARDWARE BOX		
	36	5/8" NC HEX NUTS							
	36	5/8" LOCK WASHERS							
	36	5/8" FLAT WASHERS							

LADDER LOCATION WITH NO REST PLATFORM - MODELS CS101, CS161 AND #6 - #48

NOTE - Shown as a right hand drive with double trunking.

CAUTION
Fall protection device may be required.



PLATFORM STYLE MAY VARY
DEPENDING UPON SIZE

NOTE - Ladder should extend through the top of platform at least 48". Installer should attach top of ladder to head section. 10'-0" long ladder sections should be attached at trunking joints.

MODEL	CS101	CS161	6	10	16	20	24	30	36	42	48
A	13"	17"	11"	13"	16"	14-3/4"	14-5/8"	15-3/8"	14-1/8"	18-1/8"	19"
B	47-7/16"	51-7/16"	48-7/16"	47-5/16"	58-5/8"	66"	70"	79-1/2"	86-3/4"	102-1/2"	107-3/4"

SECTION 5 - LADDER LOCATION AND ASSEMBLY

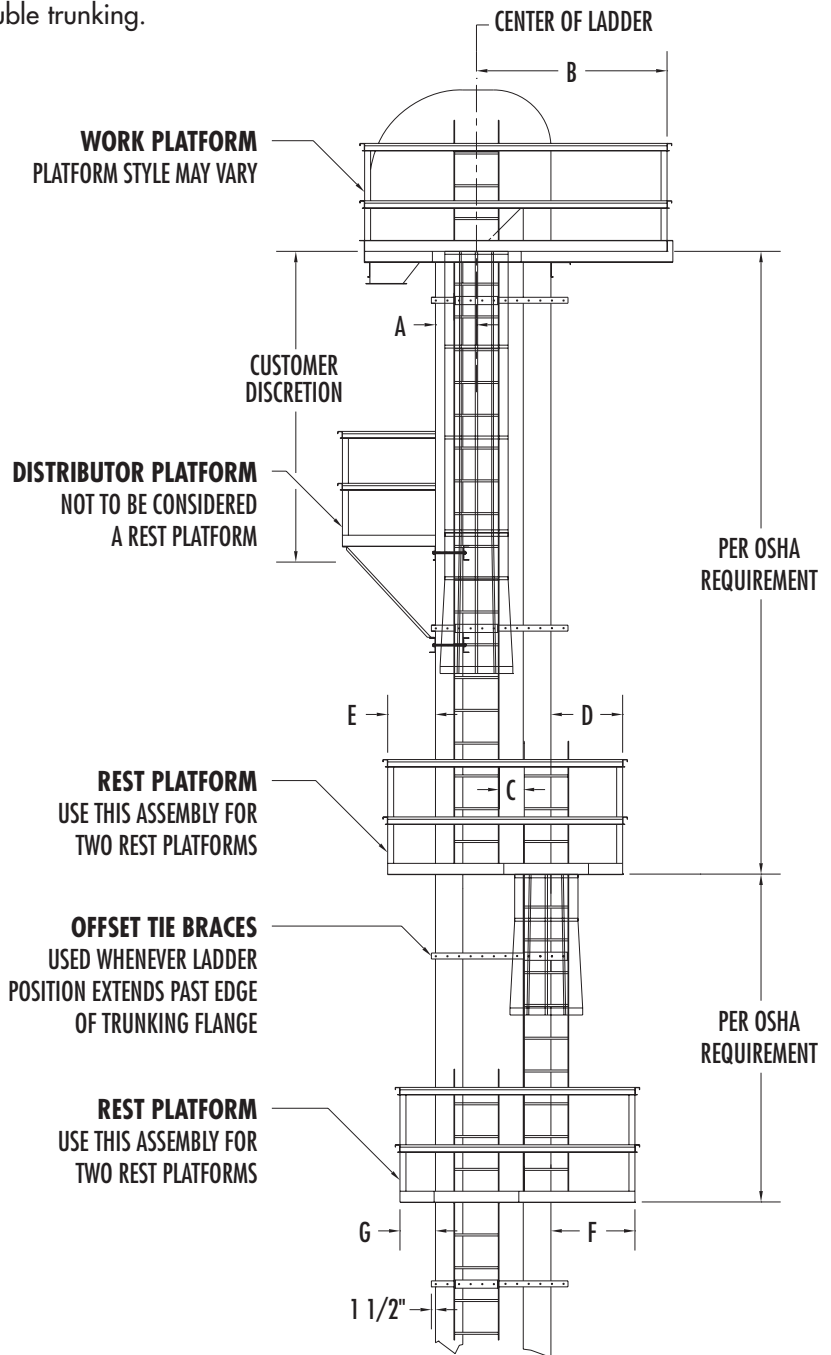
LADDER LOCATION WITH REST PLATFORM - MODELS CS101, CS161 AND #6 - #48

NOTE - Shown as a right hand drive with double trunking.

CAUTION

Fall protection device may be required.

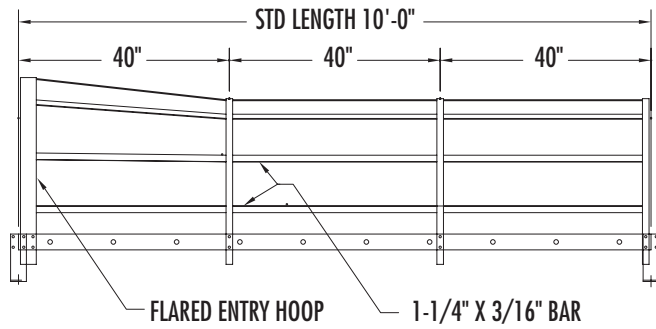
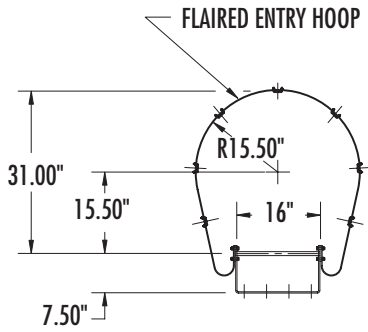
NOTE - Ladder should extend through the top of platform at least 48". Installer should attach top of ladder at each platform where necessary. (Field fab mounts) 10'-0" long ladder sections should be attached at trunking joints. Ladder, cage, and rest platforms should be installed opposite of the drive side. If there are three or more rest platforms stagger the openings as shown.



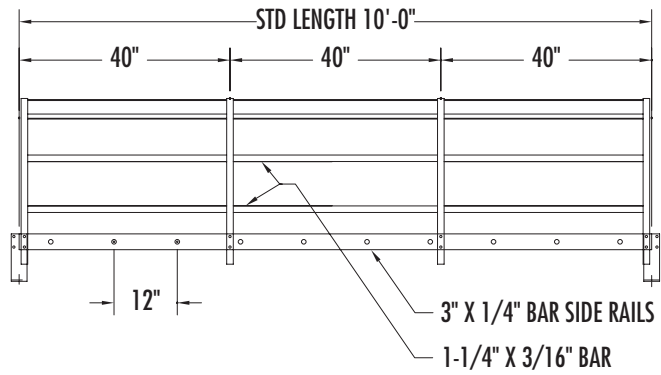
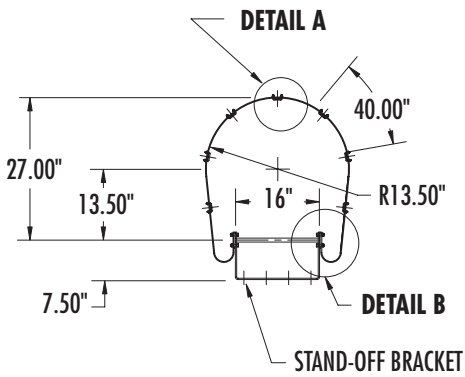
MODEL	CS101	CS161	6	10	16	20	24	30	36	42	48
A	13"	17"	11"	13"	14-7/8"	14-7/8"	14-7/8"	15-3/8"	14-1/8"	18-1/8"	19"
B	47-7/16"	51-7/16"	48-7/16"	47-5/16"	59-3/4"	65-7/8"	69-3/4"	79-1/2"	86-3/4"	102-1/2"	107-3/4"
C	8-1/4"	8-1/2"	10-1/8"	8-1/8"	8-3/8"	9-5/8"	9-3/4"	13-3/4"	13-3/4"	13-3/4"	13-3/4"
D	40-7/8"	36-7/8"	45"	41"	37-7/8"	30-5/8"	26-1/2"	21-1/8"	13-7/8"	9-7/8"	4-3/4"
E	19-1/8"	15-1/8"	19"	19"	16-1/8"	17-3/8"	17-1/2"	12-7/8"	14-1/8"	10-1/8"	9-1/4"
F	43-3/8"	39-5/8"	47-1/4"	43-1/4"	40-1/2"	34-1/2"	30-1/2"	21-3/8"	14-1/8"	10-1/8"	9"
G	16-5/8"	12-3/8"	16-3/4"	16-3/4"	13-1/2"	13-1/2"	13-1/2"	12-5/8"	13-7/8"	9-7/8"	5"
H	23-1/2"	15-1/2"	27-3/8"	23-3/8"	16-3/8"	10-3/8"	6-3/8"	1-1/2"	1-1/2"	1-1/2"	1-1/2"

LADDER ASSEMBLY

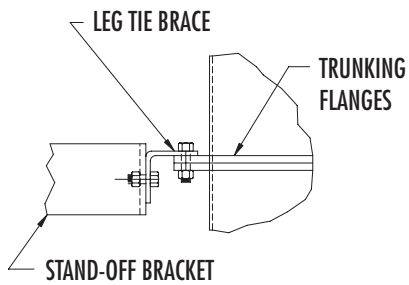
NOTE - Standard ladder is all Hot Dip Galvanized



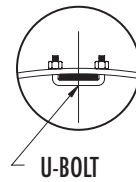
OPTIONAL 10 FT. LADDER ASSEMBLY
(with FLARED ENTRY HOOP on one end)



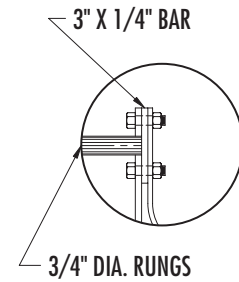
STANDARD 10 FT. LADDER ASSEMBLY



ASSEMBLY TO BUCKET ELEVATOR

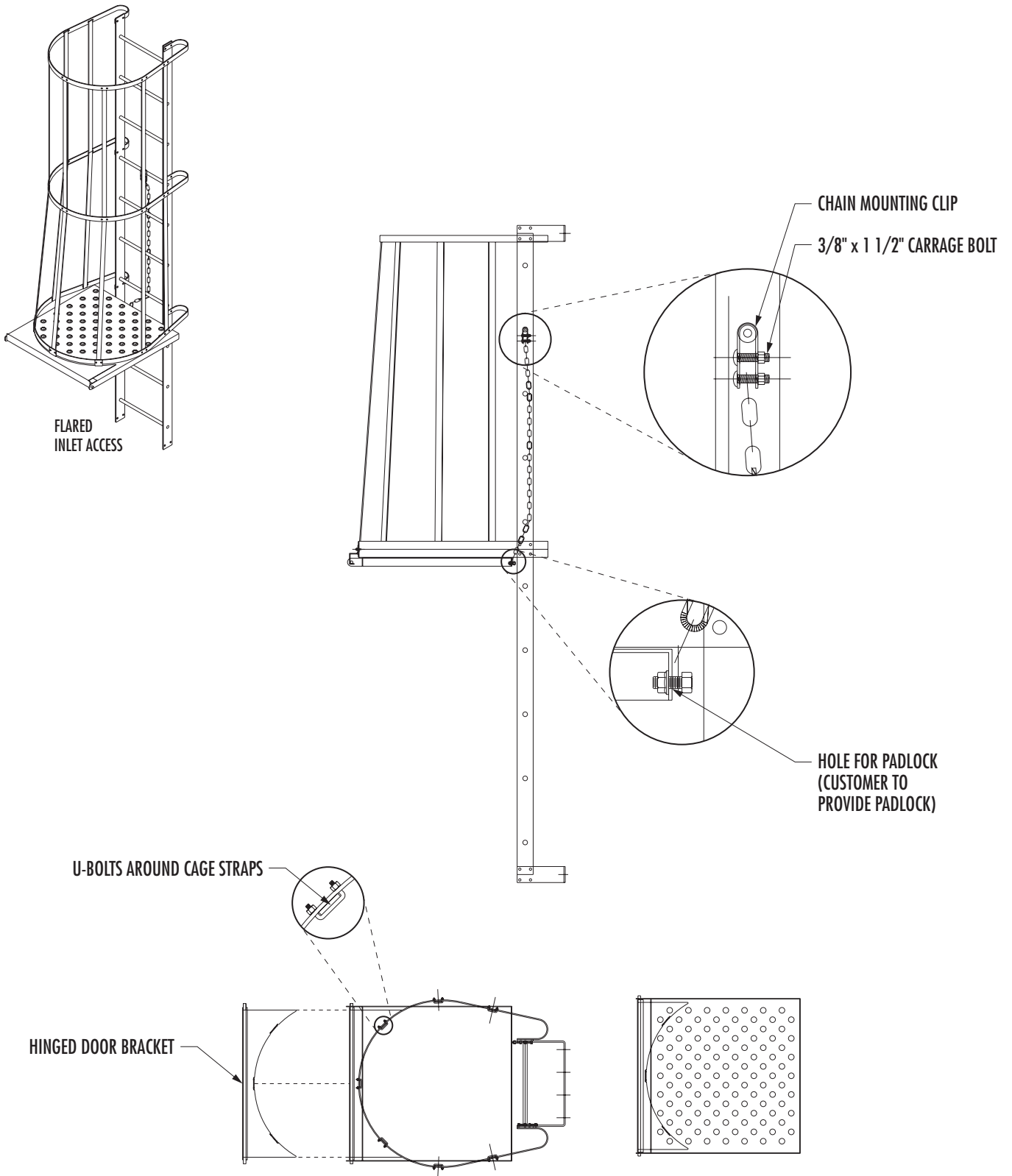


DETAIL A

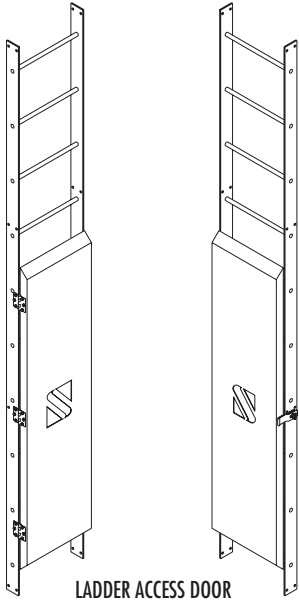


DETAIL B

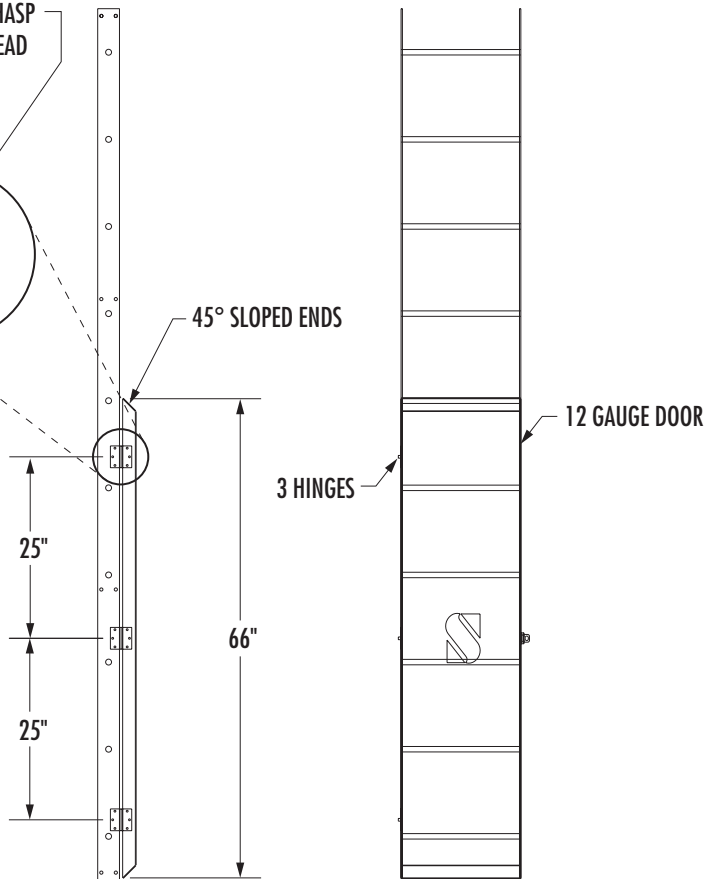
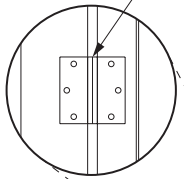
FLARED INLET ACCESS



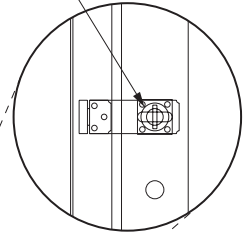
LADDER ACCESS DOOR



FIELD DRILL AND MOUNT HASP USING 1/4" x 3/4" HEX HEAD BOLTS w/FLGD NUTS



FIELD DRILL AND MOUNT HASP USING 1/4" x 3/4" HEX HEAD BOLTS w/FLGD NUTS





Please contact our service department for help with any concerns or questions about your PLATFORM.

SCHLAGEL

491 North Emerson Street • Cambridge MN 55008-1316 U.S.A.
Toll Free (800) 328-8002 FAX (763) 689-5310
Local / International (763) 689-5991 EMAIL sales@schlagel.com
www.schlagel.com